



# CCM

# 22

**S2** EUROPE  
PRODUCT  
GUIDE

# TRUST THE CODE

THE ROAD TO THE NEXT LEVEL NEVER ENDS, SO YOU ARE CONSTANTLY PUSHING YOURSELF TO BE STRONGER, FASTER AND SMARTER THAN YOUR OPPONENTS - FROM EARLY MORNINGS TO LATE NIGHTS ON THE ICE, YOU NEVER STOP.

FOR OVER 120 YEARS, CCM HAS LIVED BY THE SAME CODE: ALL OUT. ALL THE TIME. WE CONSTANTLY PUSH OURSELVES TO CREATE MORE EFFECTIVE DESIGNS, DO MORE TESTING, AND SPEND MORE HOURS COLLABORATING ON AND OFF THE ICE WITH THE BEST IN THE WORLD; BECAUSE WE'RE OBSESSED WITH CREATING GEAR THAT WILL GIVE YOU THE CONFIDENCE TO GO ALL OUT.

PURSUE

THE

NEXT

LEVEL.

**WEBSITE**  
CCMHOCKEY.COM

**TO START YOUR B2B ONLINE SHOPPING, GO TO**  
WWW.GO2CCMHOCKEY.COM AND CLICK ON "REQUEST LOGIN".

FIND US ON  
SOCIAL  
MEDIA



CCMHOCKEY



@CCMHOCKEY



CCMHOCKEY



@CCM.HOCKEY



CCMHOCKEY

## HEAD OFFICE LOCATIONS

### NORTH AMERICA

CCM HOCKEY  
3400, RAYMOND-LASNIER,  
MONTRÉAL, QUÉBEC  
H4R 3L3, CANADA  
TEL.: (800) 636-5895  
FAX: (800) 636-5751

### EUROPE

CCM HOCKEY AB  
GÅRDSVÄGEN 13  
SE 16970 SOLNA  
SWEDEN  
TEL.: + 46 (0) 8 522 352 00  
FAX: + 46 (0) 8 522 352 10

© 2022 SPORT MASKA INC. ALL RIGHTS RESERVED. CCM®, SUPERTACKS®, RIBCOR® AND THE CCM STYLIZED LOGO REGISTERED TRADEMARKS OF SPORT MASKA INC.

NHL AND THE NHL SHIELD ARE REGISTERED TRADEMARKS OF THE NATIONAL HOCKEY LEAGUE. ALL NHL LOGOS AND MARKS AND TEAM LOGOS AND MARKS DEPICTED HEREIN ARE THE PROPERTY OF THE NHL AND THE RESPECTIVE TEAMS AND MAY NOT BE REPRODUCED WITHOUT THE PRIOR WRITTEN CONSENT OF NHL ENTERPRISES, L.P. © NHL 2022. ALL RIGHTS RESERVED. © PHOTOS: GETTY IMAGES.

†: THIS CATALOG MAY REFER TO THE FOLLOWING TRADEMARKS WHICH ARE OWNED BY THE COMPANIES WHOSE NAMES APPEAR AFTER THE TRADEMARK: AHL -- AMERICAN HOCKEY LEAGUE; CLARINO -- HURARAY CO. LTD.; CHL -- CANADIAN HOCKEY LEAGUE; LYCRA, SPANDEX AND SURLYN -- E.I. DUPONT DE NEMOURS AND COMPANY; ECHL -- ECHL INC.; PLAYDRY -- REEBOK INTERNATIONAL LTD; TACTEL -- INVISTA; VELCRO -- VELCRO INDUSTRIES B.V.; THINSULATE IS A TRADEMARK OF 3M, USED UNDER LICENSE IN CANADA; D3O® -- DESIGN BLUE LTD.; JETSPED -- TAYLORMADE GOLF COMPANY INC.; SIGMATEX -- SIGMATEX (UK) LIMITED; POLYGIENE -- POLYGIENE AB; FLUID INSIDE -- MIPS AB. -- ORTHOLITE® -- ORTHOLITE.

WARNING: HOCKEY IS A DANGEROUS COLLISION SPORT. WE RECOMMEND THAT PROTECTIVE EQUIPMENT AND A CERTIFIED HELMET BE WORN AT ALL TIMES.

SPORT MASKA INC. RESERVES THE RIGHT TO CHANGE ALL PRODUCT SPECIFICATIONS AND/OR CUSTOM PROGRAMS. WHILE THE INFORMATION SHOWN IN THIS PUBLICATION WAS CORRECT AT THE TIME OF PRINTING, WE RESERVE THE RIGHT TO DISCONTINUE THE SALE OF PRODUCT OR CHANGE SPECIFICATIONS OR DESIGNS WITHOUT NOTICE OR OBLIGATION. COPYRIGHT © SPORT MASKA INC. 2022. ALL RIGHTS RESERVED. PRINTED IN CANADA. 🇨🇦



PLAYER STICKS.....	4 - 16
NAMEBAR PRINTER.....	17
PLAYER STICK CURVES.....	17
GOALIE STICKS.....	18 - 20
GOALIE STICK CURVES.....	21
APPAREL.....	22 - 23
APPAREL SIZING CHART.....	24
BASE LAYERS.....	26 - 29

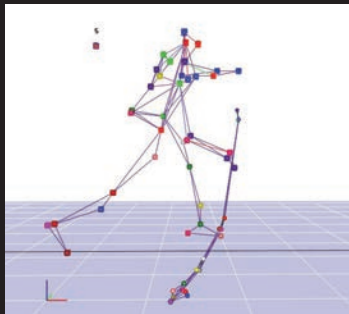
# TABLE OF CONTENTS



# CCM PERFORMANCE LAB

## RESEARCH AND RETAIL DEVELOPMENT

AT CCM, WE ARE ALWAYS LOOKING TO PUSH INNOVATION. THE STICK CATEGORY RELIES ON ADVANCES IN MECHANICAL ENGINEERING TO ALLOW DATA DRIVEN PERFORMANCE.



49

R&D STUDIES

32 638

SHOTS ANALYSED

3 140

SLASHING/PASSING/STICKHANDLING  
TASKS ANALYSED

450

PLAYERS

29

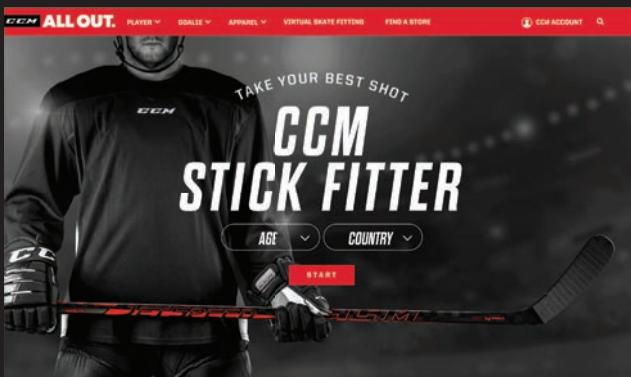
NHL PROS

116

NHL PROSPECTS

## FITTING

### ONLINE STICK FITTER



### IN-STORE STICK FITTER



THE CCM STICK FITTER IS AN INNOVATIVE RETAIL EXPERIENCE THAT IS DESIGNED TO HELP PLAYERS FIND THE RIGHT STICK FOR THEIR GAME.



# RIBCOR

# JETSPEED

# TACKS

## LOW KICK POINT

GRADUAL DECREASE IN STIFFNESS IN THE BOTTOM OF THE SHAFT TO MAXIMIZE EASE OF LOADING AND QUICK RELEASES.

## QUICK LOADING

SHORT LOADING PERIOD BENEFITS PLAYERS LOOKING FOR QUICK RELEASE OF THE PUCK.

## E-GEOMETRY



REGULAR



## HYBRID KICK POINT

OPTIMIZED FLEX ZONES CREATES A HINGE EFFECT FOR GREATER SPEED.

## RESPONSIVE LOADING

HINGE EFFECTS CONCENTRATES LOADING ZONES FOR PLAYERS LOOKING FOR BLEND OF SPEED AND RESPONSE

## R-GEOMETRY



STIFF



## MID KICK POINT

STIFF BOTTOM OF THE SHAFT FOR MORE CONTROL WITH A SOFTER MID-SECTION TO MAXIMIZE LOADING AND POWER.

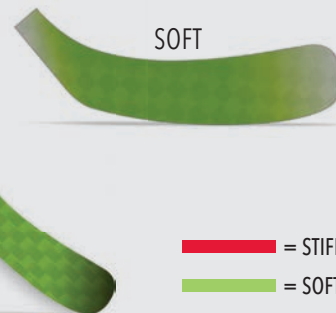
## AGGRESSIVE LOADING

THE ENERGY STORED BY THE LONGER LOADING PERIOD BENEFITS PLAYERS LOOKING FOR POWER AND ACCELERATION

## V-GEOMETRY



SOFT



— = STIFF  
— = SOFT



## CURVE COMPARISON



**P29 - PASSIVE**

**P90TM - HAPPY MEDIUM**

**P28 - AGGRESSIVE**



MORE TRADITIONAL, FOR PLAYERS WHO ARE STRAIGHTER WHEN SHOOTING

DEVELOPED FOR TODAY'S GAME, AN HYBRID OF THE P29 AND THE P28

FOR PLAYERS WHOSE HANDS ARE OUT IN FRONT AND CAN FIRE FROM THE TOE OF THE BLADE

# RIBCOR TRIGGER 7 PRO

IMPROVE OUR BEST LOW-KICK STICK? SURE THING. BY COMBINING NANOLITE CARBON LAYERING TECHNOLOGY WITH OUR NEW SIGMA ST<sup>P</sup> CARBON WEAVE, THE NEW RIBCOR TRIGGER 7 PRO HAS A BETTER BALANCE POINT AND WEIGHS LESS THAN ITS PREDECESSOR FOR AN ENHANCED FEEL AND AN ULTRA-QUICK RELEASE. IF YOU WERE SURPRISING GOALIES BEFORE, NOW IS THE TIME TO LEAVE THEM STUNNED.

## TECH 001

### NEW SIGMA ST<sup>P</sup> CARBON

SPECIFICALLY DESIGNED WITH PLAYER'S STICKS IN MIND, SIGMATEX'S NEW CARBON WEAVE IMPROVES ON PREVIOUS GENERATION'S DURABILITY AND STRENGTH, ALL WHILE ALLOWING FOR A LIGHTER AND BETTER BALANCED STICK.

## TECH 002

### NANOLITE CARBON LAYERING

HIGH-PERFORMANCE CARBON LAYERING TECHNOLOGY WHICH CREATES A STICK THAT'S BOTH INCREDIBLY LIGHT AND INCREDIBLY STRONG.

## TECH 003

### UNIQUE ERGONOMIC GEOMETRY

RIBCOR EXCLUSIVE GEOMETRY ENABLES THE PERFECT LOW KICKPOINT, HELPING TO PROVIDE EFFORTLESS LOADING AND QUICK RELEASES ON EVERY SHOT.

## TECH 004

### OPTIMIZED LOW KICKPOINT

THE PERFECT LOW KICKPOINT, PROVIDING QUICK RELEASES AND POP ON EVERY SINGLE SHOT.





[HSRC7P] **NEW****RIBCOR  
TRIGGER 7 PRO**

STICKS

SR

INT

JR

YT

NAMEBAR TAG

KICK  
POINT**OPTIMIZED LOW KICKPOINT**

The perfect low kickpoint, providing quick releases and pop on every single shot.

TAPER  
TECHNOLOGY**SKELETON +**

Manufacturing technology found in the taper area which provides better reliability in key moments of the game.

SHAFT  
TECHNOLOGY**NANOLITE CARBON LAYERING**

High-performance carbon layering technology which creates a stick that's both incredibly light and incredibly strong.

SHAFT  
GEOMETRY**ERGONOMIC "E" GEOMETRY**

Unique ergonomic geometry designed to offer a seamless energy transfer to maximize speed of release of the puck.

BLADE

**AGILITY 2 BLADE WITH PEEL-PLY**Optimized Agility blade now with Sigma ST<sup>®</sup> carbon weave for an even better feel and release speed.

GRIP

**TRIGGER MICROFEEL 2**

Updated Trigger curved raised grip to enhance stick feel in hands.

MATERIAL

Sigma ST<sup>®</sup> Spread Tow shaft and blade.**OFFERING****SR - 95 / 62"**

P28 / P29 / P90TM

**SR - 85 / 60"**

P28 / P29 / P90TM

**SR - 80 / 60"**

P28 / P29 / P90TM

**SR - 75 / 60"**

P28 / P29 / P90TM

**SR - 70 / 60"**

P28 / P29 / P90TM

**INT - 65 / 57"**

P28 / P29 / P90TM

**INT - 55 / 55"**

P28 / P29 / P90TM

**JR - 50 / 54"**

P28 / P29 / P90TM

**JR - 40 / 51"**

P28 / P29 / P90TM

**YT - 30 / 48"**

P28

**BOOKING ONLY**

SR

P19

SR - INT - JR

P88

HSRC7P - LAUNCH DATE

[HSRC7] **NEW****RIBCOR  
TRIGGER 7**

STICKS

SR

INT

JR

NAMEBAR TAG

KICK  
POINT**OPTIMIZED LOW KICKPOINT**

The perfect low kickpoint, providing quick releases and pop on every single shot.

TAPER  
TECHNOLOGY**SKELETON +**

Manufacturing technology found in the taper area which provides better reliability in key moments of the game.

SHAFT  
TECHNOLOGY**ADVANCED CARBON MATRIX**

Performance carbon layering technology now combined with Sigmatex spread tow to offer a lighter yet even more durable stick.

SHAFT  
GEOMETRY**ERGONOMIC "E" GEOMETRY**

Unique ergonomic geometry designed to offer a seamless energy transfer to maximize speed of release of the puck.

BLADE

**AGILITY BLADE WITH PEEL-PLY**

An improved blade construction that takes stick handling and feel to the next level without any compromise on shots release speed.

GRIP

**TRIGGER MICROFEEL 2**

Updated Trigger curved raised grip to enhance stick feel in hands.

MATERIAL

Sigmatex Spread Tow blade and shaft

**OFFERING****SR - 95 / 62"**

P28 / P29 / P90TM

**SR - 85 / 60"**

P28 / P29 / P90TM

**SR - 80 / 60"**

P28 / P29 / P90TM

**SR - 75 / 60"**

P28 / P29 / P90TM

**INT - 65 / 57"**

P28 / P29 / P90TM

**INT - 55 / 55"**

P28 / P29 / P90TM

**JR - 50 / 54"**

P28 / P29 / P90TM

**JR - 40 / 51"**

P28 / P29 / P90TM

**BOOKING ONLY**

SR

P19

SR - INT - JR

P88

HSRC7 - LAUNCH DATE

[HSRC86] **NEW**

# RIBCOR 86K STICK

SR  
INT  
JR

KICK  
POINT

## LOW KICKPOINT

Engineered low kickpoint to help increase release speed on shots.

SHAFT  
GEOMETRY

## ERGONOMIC "E" GEOMETRY

Unique ergonomic geometry designed to offer a seamless energy transfer to maximize speed of release.

BLADE

## ASCENT BLADE 2 WITH PEEL-PLY

An optimized stiffness profile that transitions seamlessly from softer in the heel to extra stiff in the toe for heightened puck feel and quick releases.

MATERIAL

C6 Weave on blade.

### OFFERING

**SR - 85 / 60"**  
P28 / P29

**SR - 75 / 60"**  
P28 / P29

**INT - 65 / 57"**  
P28 / P29

**INT - 55 / 55"**  
P28 / P29

**JR - 50 / 54"**  
P28 / P29

**JR - 40 / 51"**  
P28 / P29

[HSRC84] **NEW**

# RIBCOR 84K STICK

SR  
INT  
JR

KICK  
POINT

## LOW KICKPOINT

Engineered low-Kickpoint to help increase release speed on shots.

SHAFT  
GEOMETRY

## SQUARE "T" GEOMETRY

This proven square-shaped design provides players with a traditional feel that provides great grip and control.

BLADE

## COMPOSITE STIFF BLADE

Carbon and fiberglass blade designed for great durability.

### OFFERING

**SR - 85 / 60"**  
P28 / P29

**SR - 75 / 60"**  
P28 / P29

**INT - 65 / 57"**  
P28 / P29

**INT - 55 / 55"**  
P28 / P29

**JR - 50 / 54"**  
P28 / P29

**JR - 40 / 51"**  
P28 / P29





[HSRC7Y] **NEW**  
**RIBCOR**  
**YOUTH**  
STICKS

YT

SHAFT

Lightweight and super durable, the shaft is designed to help smaller hands handle a stick like its second nature.

BLADE

Featuring a stiff, lightweight design, this blade allows young players to lift the puck and upgrade their shooting technique

GRIP

Full grip offers greater stick control and minimized rotation in young players' hands.

OFFERING

**30 FLEX / 48"**  
P29

**20 FLEX / 45"**  
P29

**10 FLEX / 42"**  
P29

HSRC7Y - LAUNCH DATE



# TACKS AS-V PRO

TODAY'S HOCKEY GAME HAS EVOLVED AND SO HAS TACKS. THE NEW TACKS AS-V PRO IS A MODERN REDESIGN OF A POWERFUL MID KICKPOINT STICK, WITH A COMPLETELY NEW SHAFT GEOMETRY ALLOWING FOR A COMFORTABLE GRIP, EASY LOADING, AND INCREASED WRIST SHOT POWER. THE COMBINATION OF OUR NEW SIGMA ST<sup>P</sup> CARBON WEAVE WITH NANOLITE CARBON LAYERING CREATES THE BEST-BALANCED TACKS STICK EVER MADE, WHILE REMAINING EXTREMELY DURABLE. THIS IS NOT YOUR FATHER'S TACKS STICK; THE TACKS AS-V PRO IS MODERN POWER FOR TODAY'S GAME.

## TECH 001

### VARIABLE V-SHAPE GEOMETRY

THE NEW TACKS AS-V PRO STICK FEATURES A TRANSITION FROM TACKS TRADITIONAL T-SHAPE GEOMETRY AT THE TOP OF THE SHAFT TO A ROUNDER V SHAPE IN THE MID-SECTION. THIS NEW V-SHAPE GEOMETRY HELPS EASILY LOAD THE STICK TO GENERATE EXTRA POWER WHEN SHOOTING, PROVIDES CONSISTENCY AND PREDICTABILITY ON ALL SHOTS AND CREATES A PERFECT GRIP FOR THE PLAYERS' LOWER HAND.

## TECH 002

### SIGMA ST<sup>P</sup> CARBON

SPECIFICALLY DESIGNED WITH PLAYER'S STICKS IN MIND, SIGMATEX'S NEW CARBON WEAVE IMPROVES ON PREVIOUS GENERATION'S DURABILITY AND STRENGTH, ALL WHILE ALLOWING FOR A LIGHTER AND BETTER BALANCED STICK.

## TECH 003

### NANOLITE CARBON LAYERING

HIGH-PERFORMANCE CARBON LAYERING TECHNOLOGY WHICH CREATES A STICK THAT'S BOTH INCREDIBLY LIGHT AND INCREDIBLY STRONG.

## TECH 004

### MODERN MID KICKPOINT

THE SOFTER MID-SECTION OF THE SHAFT ENSURES MAXIMUM ENERGY STORAGE WHEN LOADING THE STICK. THE NEW MODERN MID KICKPOINT OF THE TACKS AS-V PRO HAS BEEN OPTIMIZED FOR WRIST SHOTS, ENABLING AGGRESSIVE SHOOTERS WITH EVEN MORE PUCK SPEED AND CONSISTENCY THAN BEFORE.



[HSAS5P] **NEW**  
**TACKS**  
**AS-V PRO**  
 STICKS

SR  
 INT  
 JR  
 YT

**NAMEBAR TAG**

KICK POINT	<b>MODERN MID KICKPOINT</b> Still using a softer mid-section to ensure maximum energy storage when loading the stick, our new modern mid kickpoint has now been optimized for wrist shots, providing aggressive shooters with even more puck speed and consistency than before.
TAPER TECHNOLOGY	<b>SKELETON +</b> Manufacturing technology found in the taper area which provides better reliability in key moments of the game.
SHAFT TECHNOLOGY	<b>NANOLITE CARBON LAYERING</b> High-performance carbon layering technology which creates a stick that's both incredibly light and incredibly strong.
SHAFT GEOMETRY	<b>VARIABLE "V" GEOMETRY</b> New shaft geometry allowing for an easier and consistent loading of the stick to help increase wrist shot power. It's shape transition along the shaft ensures maximum comfort and grip.
BLADE	<b>ACUFEEL 2 BLADE WITH PEEL-PLY</b> 2nd generation ACUFEEL blade now with Sigma ST <sup>®</sup> to further improve durability. Still softer to maximize shot speed and puck feel.
GRIP	<b>SUPERFAST MICROFEEL</b> Graphic-integrated raised grip on mid-section of the shaft to ensure perfect stick control.
MATERIAL	Sigma ST <sup>®</sup> Spread Tow shaft and blade.

**OFFERING**

<b>SR - 95 / 62"</b> P28 / P29 / P90TM	<b>INT - 65 / 57"</b> P28 / P29 / P90TM
<b>SR - 85 / 60"</b> P28 / P29 / P90TM	<b>INT - 55 / 55"</b> P28 / P29 / P90TM
<b>SR - 80 / 60"</b> P28 / P29 / P90TM	<b>JR - 50 / 54"</b> P28 / P29 / P90TM
<b>SR - 75 / 60"</b> P28 / P29 / P90TM	<b>JR - 40 / 51"</b> P28 / P29 / P90TM
<b>SR - 70 / 60"</b> P28 / P29 / P90TM	<b>YT - 30 / 48"</b> P28

**BOOKING ONLY**

SR  
 P19  
 SR - INT - JR  
 P88

HSASSP - LAUNCH DATE

[HSAS5] **NEW**  
**TACKS**  
**AS-V**  
 STICKS

SR

**NAMEBAR TAG**

KICK POINT	<b>MODERN MID KICKPOINT</b> Still using a softer mid-section to ensure maximum energy storage when loading the stick, our new modern mid kickpoint has now been optimized for wrist shots, providing aggressive shooters with even more puck speed and consistency than before.
TAPER TECHNOLOGY	<b>SKELETON +</b> Manufacturing technology found in the taper area which provides better reliability in key moments of the game.
SHAFT TECHNOLOGY	<b>ADVANCED CARBON MATRIX</b> Performance carbon layering technology now combined with Sigmatex spread tow to offer a lighter yet even more durable stick.
SHAFT GEOMETRY	<b>SQUARE "T" GEOMETRY</b> This proven square-shaped design provides players with a traditional feel that provides great grip and control.
BLADE	<b>ACUFEEL BLADE WITH PEEL-PLY</b> Perfected to achieve the right blend of stiffness and feel, the ACUFEEL blade is stiff enough to deliver accuracy and control, yet softer to improve puck feel.
GRIP	<b>SUPERFAST MICROFEEL</b> Graphic-integrated raised grip on mid-section of the shaft to ensure perfect stick control.
MATERIAL	Sigmatex Spread Tow shaft and blade.

**OFFERING**

<b>SR - 95 / 62"</b> P28 / P29 / P90TM
<b>SR - 85 / 60"</b> P28 / P29 / P90TM
<b>SR - 80 / 60"</b> P28 / P29 / P90TM
<b>SR - 75 / 60"</b> P28 / P29 / P90TM
<b>SR - 70 / 60"</b> P28 / P29 / P90TM

**BOOKING ONLY**

SR  
 P19 / P88

HSASS - LAUNCH DATE



[HSAS570] **NEW**  
**TACKS**  
**AS-570**  
 STICKS

SR

INT

JR

**NAMEBAR TAG****KICK POINT****MID KICKPOINT**

Built with a soft mid-section for longer loading periods to store maximum energy, plus a stiff taper zone to boost stability and response.

**SHAFT GEOMETRY****SQUARE "T" GEOMETRY**

This proven square-shaped design provides players with a traditional feel that provides great grip and control.

**BLADE****ULTRAATTACKFRAME BLADE WITH GRIT FINISH**

Lightweight blade with high torsional and bending stiffness for accurate shooting and passing.

**OFFERING**

**SR - 85 / 60"**  
P28 / P29

**SR - 75 / 60"**  
P28 / P29

**INT - 65 / 57"**  
P28 / P29

**INT - 55 / 55"**  
P28 / P29

**JR - 50 / 54"**  
P28 / P29

**JR - 40 / 51"**  
P28 / P29

JR

SR / INT

HSAS570 - LAUNCH DATE



[HSFT5P]  
**JETSPEED  
FT5 PRO**  
STICKS

SR  
INT  
JR  
YT

NAMEBAR TAG

KICK POINT  
**HYBRID KICKPOINT**  
Creates a hinge effect so you can load the stick using a perfect balance of speed and response.

TAPER TECHNOLOGY  
**SKELETON +**  
Manufacturing technology found in the taper area which provides better reliability in key moments of the game.

SHAFT TECHNOLOGY  
**NANOLITE CARBON LAYERING**  
High-performance carbon layering technology which creates a stick that's both incredibly light and incredibly strong.

SHAFT GEOMETRY  
**ROUND "R" GEOMETRY**  
A streamlined shape with rounded corners and concave sides that keeps gaining in popularity. It delivers high performance and ultimate comfort.

BLADE  
**OPTIMIZED RR-90 BLADE WITH DAMP-CORE AND PEEL-PLY**  
Popular RR-90 blade now improved with Sigma STP carbon weave for an even better feel and enhanced durability.

MATERIAL  
Sigma STP® Spread Tow shaft and blade.

**OFFERING**

**SR - 95 / 62"**  
P28 / P29 / P90TM  
**SR - 85 / 60"**  
P28 / P29 / P90TM  
**SR - 80 / 60"**  
P28 / P29 / P90TM  
**SR - 75 / 60"**  
P28 / P29 / P90TM  
**SR - 70 / 60"**  
P28 / P29 / P90TM

**INT - 65 / 57"**  
P28 / P29 / P90TM  
**INT - 55 / 55"**  
P28 / P29 / P90TM  
**JR - 50 / 54"**  
P28 / P29 / P90TM  
**JR - 40 / 51"**  
P28 / P29 / P90TM  
**YT - 30 / 48"**  
P28

**BOOKING ONLY**

**SR**  
P19  
**SR - INT - JR**  
P88

[HSFT5]  
**JETSPEED  
FT5**  
STICKS

SR  
INT  
JR

NAMEBAR TAG

KICK POINT  
**HYBRID KICKPOINT**  
Creates a hinge effect so you can load the stick using a perfect blend of speed and response.

TAPER TECHNOLOGY  
**SKELETON +**  
Manufacturing technology found in the taper area which provides better reliability in key moments of the game.

SHAFT TECHNOLOGY  
**ADVANCED CARBON MATRIX**  
Performance carbon layering technology now combining with Sigmatex spread tow to offer a lighter yet sturdier stick.

SHAFT GEOMETRY  
**ROUND "R" GEOMETRY**  
A streamlined shape with rounded corners and concave sides that keeps gaining in popularity. It delivers high performance and ultimate comfort.

BLADE  
**RR-90 BLADE WITH DAMP-CORE AND PEEL-PLY**  
Featuring our exclusive dampening material and an optimized stiffness, it provides the right mix of feel and ultimate comfort.

MATERIAL  
Sigmatex Spread Tow shaft and blade.

**OFFERING**

**SR - 95 / 62"**  
P28 / P29 / P90TM  
**SR - 85 / 60"**  
P28 / P29 / P90TM  
**SR - 80 / 60"**  
P28 / P29 / P90TM  
**SR - 75 / 60"**  
P28 / P29 / P90TM

**INT - 65 / 57"**  
P28 / P29 / P90TM  
**INT - 55 / 55"**  
P28 / P29 / P90TM  
**JR - 50 / 54"**  
P28 / P29 / P90TM  
**JR - 40 / 51"**  
P28 / P29 / P90TM

**BOOKING ONLY**

**SR**  
P19  
**SR - INT - JR**  
P88

[HSJ475]

# JETSPEED 475 STICK

SR  
INT  
JR

KICK  
POINT

## HYBRID KICKPOINT

Creates a hinge effect so you can load the stick using a perfect blend of speed and response

SHAFT  
DIMENSIONS

## ROUND "R" GEOMETRY

A streamlined shape with rounded corners and concave sides that keeps gaining in popularity. It delivers high performance and ultimate comfort

BLADE

## JS3 BLADE WITH PEEL-PLY

Lightweight blade with damped core for a mix of puck feel and shot speed.

MATERIAL

C6 Weave on blade.

## OFFERING

**SR - 85 / 60"**  
P28 / P29

**SR - 75 / 60"**  
P28 / P29

**INT - 65 / 57"**  
P28 / P29

**INT - 55 / 55"**  
P28 / P29

**JR - 50 / 54"**  
P28 / P29

**JR - 40 / 51"**  
P28 / P29

JR

SR / INT

[HSJ465]

# JETSPEED 465 STICK

SR  
INT  
JR  
YT

KICK  
POINT

## HYBRID KICKPOINT

Creates a hinge effect so you can load the stick using a perfect blend of speed and response.

SHAFT  
GEOMETRY

## ROUND "R" GEOMETRY

A streamlined shape with rounded corners and concave sides that keeps gaining in popularity. It delivers high performance and ultimate comfort.

BLADE

## STIFF BLADE

A stiff blade designed to provide speed on every shot.

## OFFERING

**SR - 85 / 60"**  
P29

**SR - 75 / 60"**  
P29

**INT - 65 / 57"**  
P29

**INT - 55 / 55"**  
P29

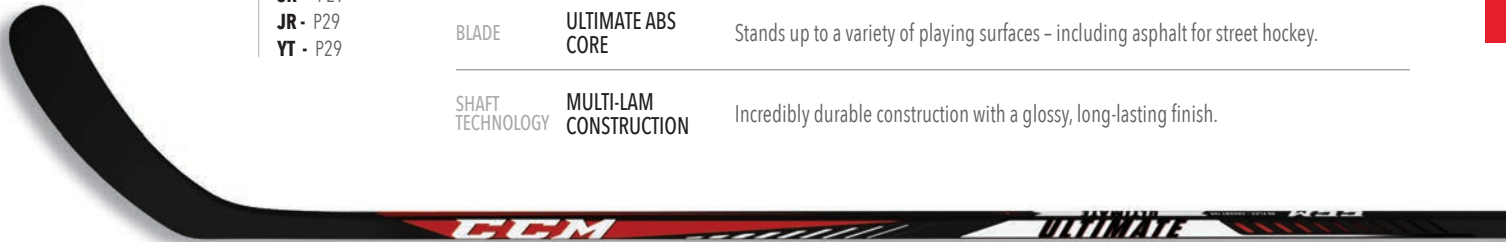
**JR - 50 / 54"**  
P29

**JR - 40 / 51"**  
P29

**YT - 30 / 45"**  
P29

**YT - 20 / 43"**  
P29





OFFERING

- SR - P29
- JR - P29
- YT - P29

[HSULT]  
**ULTIMATE** STICK

\*ALSO RECOMMENDED  
FOR STREET HOCKEY

SR

JR

YT

BLADE	ULTIMATE ABS CORE	Stands up to a variety of playing surfaces – including asphalt for street hockey.
SHAFT TECHNOLOGY	MULTI-LAM CONSTRUCTION	Incredibly durable construction with a glossy, long-lasting finish.

[ENDPLU]  
**END  
PLUG**

4 inch composite end plug.  
Shapes: T - R - F



[ENDPLU]  
**END PLUG**

4 inch wood end plug.  
Sizes: SR, JR



[HSNAMEP]

## NAMEBAR PRINTER

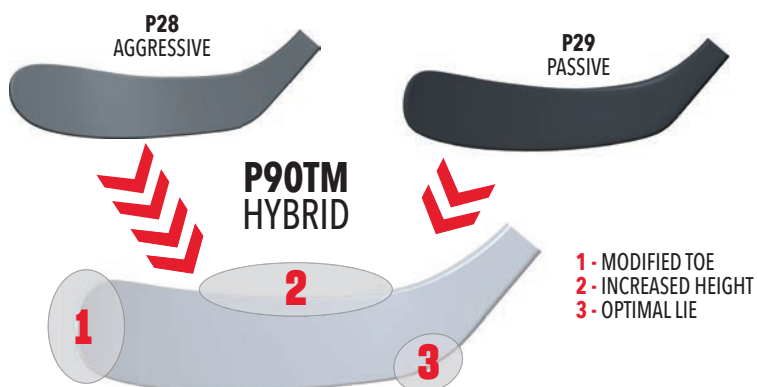
A RETAIL TOOL THAT ALLOWS PLAYERS TO HAVE THEIR NAME PERMANENTLY PRINTED ON THEIR STICK, JUST LIKE THE PROS.

### HOW IT WORKS:

- 1) Simply type in the name of the player.
- 2) Press the printer on the namebar and release the trigger.
- 3) Slowly move the printer downwards.

[HSNAMEI]

### REPLACEMENT INK CARTRIDGE



## P90TM CURVE EVALUATION

POPULAR WITH OUR PRO PLAYERS, THE NEW P90TM BLENDS THE P28 AND THE P29 CURVES AND A SUBTLE TOE CURVE. COMBINED WITH A MAX HEIGHT AND A LOWER LIE, THIS IS IDEAL FOR THE PLAYER LOOKING FOR AN EDGE ON FACE-OFFS OR TO HELP TIPPING PUCKS IN THE AIR.

		<b>POSITION</b> MID/TOE <b>SIZE</b> BIG <b>OPENESS</b> OPENED	<b>DESCRIPTION</b> Aggressive curve for players who can shoot from the toe with their hands in front of their body.	<b>P28 (186-2)</b> FORMER CCM MCDAVID BAUER P28 / WARRIOR W28 / EASTON E28 / TRUE TC3
		<b>POSITION</b> MID <b>SIZE</b> BIG <b>OPENESS</b> OPENED	<b>DESCRIPTION</b> All-in-one curve with lower lie for players who are straighter when passing and shooting.	<b>P29 (203-2)</b> FORMER CCM CROSBY BAUER P92 / WARRIOR W03 / TRUE TC2 / EASTON E/P3 / SHERWOOD PP26
		<b>POSITION</b> MID <b>SIZE</b> BIG <b>OPENESS</b> OPENED	<b>DESCRIPTION</b> Perfect blend of P28 aggressive toe and P29 dual lie with a max height feature.	<b>P90TM</b>
		<b>POSITION</b> MID <b>SIZE</b> MEDIUM <b>OPENESS</b> CLOSED	<b>DESCRIPTION</b> Traditional curve that is perfect for stickhandling and shot control.	<b>P88 (184-1)</b> FORMER CCM OVECHKIN BAUER P88, WARRIOR W88, EASTON E36, TRUE MC





# EFLEX 5 PROLITE

THE NEW EFLEX 5 PROLITE IS OUR LIGHTEST GOALIE STICK EVER MADE, MAKING IT THE PERFECT TOOL FOR LIGHTNING-QUICK REFLEXES. BUILT WITH OUR NEW SIGMA ST<sup>G</sup> CARBON CONSTRUCTION, THIS STICK WILL HELP YOU MAKE EVERY INCREDIBLE STICK SAVE WITHOUT ANY OF THE UNWANTED VIBRATIONS.

## TECH 001

### ULTRALIGHT DESIGN WITH SIGMA ST<sup>G</sup> CARBON WEAVE

THE EFLEX 5 PROLITE IS 30G LIGHTER THAN ANYTHING WE'VE EVER MADE, WHILE ACHIEVING IMPRESSIVE DURABILITY PERFORMANCE THANKS TO IT'S FULL CARBON DESIGN. SIGMA ST<sup>G</sup> IS OUR NEW SIGMATEX CARBON WEAVE DESIGNED SPECIFICALLY FOR GOALIES TO ENSURE TOP DURABILITY AND PERFORMANCE.

## TECH 002

### OPTIMIZED VIBRATION DAMPENING CONSTRUCTION

USING AEROGRADE FOAM TO COMPLEMENT A FULL CARBON CONSTRUCTION, THE EFLEX 5 PROLITE OFFERS ENHANCED VIBRATION DAMPENING FOR THE PERFECT BALANCE BETWEEN SHOT PERCEPTION AND COMFORT.

## TECH 003

### NEW HIGH FLEX PROFILE

COMBINING A STIFFER PADDLE AND A SOFTER SHAFT, THIS NEW FLEX PROFILE HAS BEEN DEVELOPED TO HELP STOP PUCKS ALONG THE BOARDS AND EASILY CLEAR THE ZONE WHEN NEEDED.



OFFERING

BOOKING ONLY

HSE5PLP

P1 - L

SR: 27" / 26" / 25"

INT: 24"

COLORS

BLACK / PURPLE

HSE5PLC

P4 - L/R

SR: 27" / 26" / 25"

INT: 24"

COLORS

WHITE / GREY

[HSE5PLP] [HSE5PLC] **NEW**  
**EFLEX5 PROLITE**  
STICK

SR

INT

NAMEBAR TAG

PADDLE TECHNOLOGY	OPTIMIZED VIBRATION DAMPENING CONSTRUCTION WITH AEROGRADE FOAM	Improved construction offering enhanced vibration dampening from the combination of a full carbon construction with high-performance aerograde dampening foam.
MATERIAL	SIGMATEX SIGMA ST <sup>6</sup> CARBON WEAVE	New goalie stick specific carbon weave that helps reduce the weight drastically, while still offering exceptional durability.
FLEX PROFILE	NEW HIGH FLEX PROFILE	Combining a stiffer paddle and a softer shaft, this new flex profile has been developed to enable easier puck stopping along the board and zone clearances when needed.
SHAFT TECHNOLOGY	ROUNDED SHAPE	The rounded shape delivers greater impact resistance and better comfort.



HSESPL - LAUNCH DATE

OFFERING

BOOKING ONLY

HSE59P

P1 - L

SR: 27" / 26" / 25"

INT: 24"

JR: 23"/21"

COLORS

L  
WHITE / RED

HSE59C

P4 - L/R

SR: 27" / 26" / 25"

INT: 24"

JR: 23"/21"

COLORS

L/R  
WHITE / BLACK

[HSE59P] [HSE59C]  
**EFLEX5.9**  
STICK

SR

INT

JR

NAMEBAR TAG

PADDLE TECHNOLOGY	ZEROFLUX TECHNOLOGY	Lightweight structure built to dampen vibrations for great puck feel and rebound control.
MATERIAL	CARBON MATRIX TECHNOLOGY ON BLADE	A carbon fiber weave that provides overall stiffness and strength for better durability.
FLEX PROFILE	NEW LOW FLEX WITH SOFTER SHAFT	This low flex profile has been improved to match the needs of today's game. Playing the puck will be easier than ever with this lower and softer kick point.
SHAFT TECHNOLOGY	ROUNDED SHAPE	The rounded shape delivers greater impact resistance and better comfort.



OFFERING

P4 - L/R  
 SR: 27" / 26" / 25"  
 INT: 24"  
 JR: 23"/21"  
 COLORS  
 WHITE / BLACK

[HSE55C] **NEW**  
**EFLEX5.5**  
 STICK

SR | INT | JR

PADDLE TECHNOLOGY	ZEROFLUX TECHNOLOGY	Lightweight structure built to dampen vibrations for great puck feel and rebound control.
SHAFT TECHNOLOGY	ROUNDED SHAPE	The rounded shape delivers greater impact resistance and better comfort.



HSE55C - LAUNCH DATE

OFFERING

P4 - L/R  
 YT: 18" / 20"  
 COLORS  
 WHITE / BLACK

[HSEFYT] **NEW**  
**EFLEX YOUTH**  
 STICK

YT

GEOMETRY	ADAPTED YOUTH SHAFT AND PADDLE	Durable yet lightweight, the shaft and paddle are designed to help smaller hands grip their stick the right way so that they can better hold onto it when making their first saves.
BLADE	ADAPTED YOUTH BLADE	Designed with the next generation of goalies in mind, the adapted blade allows the stick to lie correctly on the ice to ease kids' stability and help them stop more pucks.



HSEFYT - LAUNCH DATE



# CUSTOMIZER

PLEASE VISIT FOR  
MORE INFORMATION: [CCMHOCKEY.COM/EN/PRODUCT/GOALIE/CUSTOMIZER](http://CCMHOCKEY.COM/EN/PRODUCT/GOALIE/CUSTOMIZER)  
PLEASE ASK YOUR REP TO BOOK CUSTOM STICKS (BOOKING CUSTOMIZER)

STICK CUSTOMIZER

## COMPOSITE

### 1 - EFLEX 5 PROLITE



### 1 - EFLEX 5 PRO



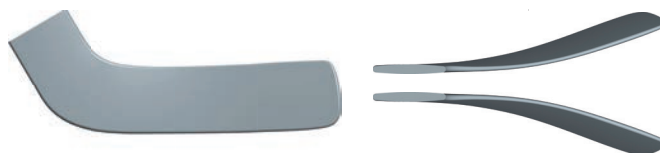
## GOALIE CURVE CHART



**P1 (142-3)**

**POSITION** HEEL  
**SIZE** MEDIUM  
**OPENESS** VERY OPENED

**BENEFITS** FOR GOALIES WHO LIKE TO  
CLEAR THE ZONE IN THE AIR  
AND/OR OFF THE GLASS



**P4 (182-2)**

**POSITION** HEEL  
**SIZE** BIG  
**OPENESS** SLIGHTLY OPENED

**BENEFITS** DEEP CURVE TO HELP MOVE  
THE PUCK UP QUICKLY



[TSS27C] **NEW**  
**LUMBER YARD  
TEE**

	SIZES	AD	S - 2XL
		YT	M - XL
BODY	Soft feel short sleeve tee.	CONTENT 50% polyester / 25% cotton / 25% rayon.	
LOGO	Front logo and back graphic printed.	COLORS BLACK (12), WHITE (01)	



[TLS27A] **NEW**  
**HOCKEY STICKS  
LS TEE**

	SIZES	AD	S - 2XL
		YT	M - XL
BODY	Soft feel long sleeve tee.	CONTENT 50% polyester / 25% cotton / 25% rayon.	
LOGO	Front logo and back graphic printed.	COLORS BLACK (12)	



[FH027A] **NEW**  
**PLAID PULLOVER  
FLEECE HOODIE**

	SIZES	AD	S - 2XL
		YT	M - XL
BODY	CVC fleece pullover hoodie with kangaroo pocket.	CONTENT 70% cotton / 30% polyester.	
LOGO	Plaid applique.	COLORS BLACK (12)	



[WCR27A] **NEW**  
**UGLY  
CHRISTMAS SWEATER**

	SIZES	AD	S - 2XL
		YT	M - XL
BODY	Knit sweater with festive jacquard	CONTENT 100% Acrylic.	
LOGO	Embroidered.	COLORS BLACK (12)	



[HSL27A] **NEW**  
**PLAID LEAF SLOUCH  
ADJUSTABLE**

	SIZES	SR	OSFA
BODY	Relaxed slouch fit with an adjustable		
CONTENT	64% Polyester, 34% Rayon, 2% PU		
OTHER	MOQ 6 units (same sizes / color)		
LOGO	Flat embroidered logo		
COLORS	BLACK (12)		



[HTR27A] **NEW**  
**LUMBER YARD  
TRUCKER**

	SIZES	SR	OSFA
BODY	Structured mid crown trucker cap with an adjustable snap closure		
CONTENT	64% Polyester, 34% Rayon, 2% PU		
LOGO	Raised and flat brushed yarn embroidered logo		
COLORS	BLACK (12)		



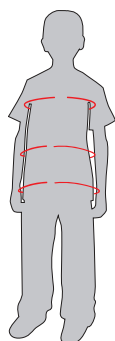
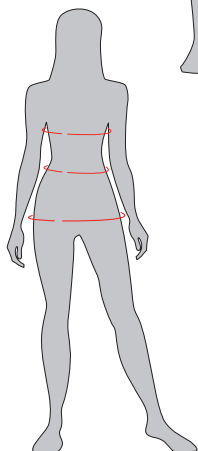
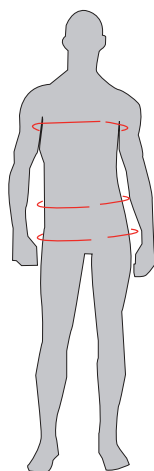
[HPM27A] **NEW**  
**LEAF  
KNIT POM**

	SIZES	SR	OSFA
BODY	Cuffed knit with ribbing, and a soft fleece lining,		
CONTENT	100% REPREVE		
LOGO	Jacquard graphic and CCM logo tab		
COLORS	BLACK (12)		



[HPM27B] **NEW**  
**LUMBER YARD  
KNIT POM**

	SIZES	SR	OSFA
BODY	Cuffed knit with ribbing, and a soft fleece lining,		
CONTENT	100% REPREVE		
LOGO	Lumberyard brushed yarn embroidery and jacquard graphic		
COLORS	WHITE (01)		



## MEN BODY MEASUREMENTS (measurements shown are in inches)

ALPHA SIZE	XS	S	M	L	XL	2XL	3XL
CHEST CIRCUMFERENCE	33-35	36-38	39-41	42-44	45-48	49-52	53-58
WAIST CIRCUMFERENCE	26-28	29-31	32-34	35-38	39-43	44-48	49-53
HIPS CIRCUMFERENCE	32-34	35-37	38-40	41-44	45-48	48-52	52-56

NUMERIC SIZE	28	30	32	34	36	38	40
WAIST CIRCUMFERENCE	29.5	31.5	33.5	35.5	37.5	39.5	41.5

## WOMEN BODY MEASUREMENTS (measurements shown are in inches)

ALPHA SIZE	XS	S	M	L	XL
CHEST CIRCUMFERENCE	30-32	33-35	36-38	39-41	42-44
WAIST CIRCUMFERENCE	23-25	26-28	29-31	32-34	35-38
HIPS CIRCUMFERENCE	33-35	36-38	39-41	42-44	45-48

## YOUTH BODY MEASUREMENTS (measurements shown are in inches)

AGE GROUP / SIZE	3 - 5 / 2XS / 110	5 - 7 / XS / 120	7 - 9 / S / 130	9 - 11 / M / 140	11 - 13 / L / 150	13 - 15 / XL / 160
CHEST CIRCUMFERENCE	24-25	25-26	26-27	27-29	29-31	31-34
WAIST CIRCUMFERENCE	22-23	23-24	24-25	25-27	27-28.5	28.5-30
HIPS CIRCUMFERENCE	25-26	26-27	27-28.5	28.5-31	31-32.5	32.5-34

## MEASUREMENT FOR ADULT HEADWEAR

INCHES	CM	HAT SIZE			
		FITTED	FLEX	ADJUSTABLE	
20 1/8	51.1	6 3/8		ONE SIZE YT (OSFA)	
20 1/2	52	6 1/2			
20 7/8	53	6 5/8	YOUTH		
21 1/4	53.9	6 3/4			
21 5/8	54.9	6 7/8			
22	55.9	7	S/M	ONE SIZE AD (OSFA)	
22 3/8	56.8	7 1/8			
22 3/4	57.8	7 1/4			
22 7/8	58.7	7 3/8	L/XL		
23 1/2	59.7	7 1/2			
23 7/8	60.6	7 5/8			
24 1/4	61.6	7 3/4	XL/XXL		
24 5/8	62.5	7 7/8			
25	63.5	8 1/4			

Body sizing: Size specifications are based on body sizing measurements. Use this size chart as a guideline when ordering, allow enough room for ease of movement. Sleeve Length: Measure from the center back of the neck, over the point of shoulder and down the outer side of the arm to the wrist bone. Chest: Measure just under the arms. Waist: Loosely measure the narrowest circumference of the waist. Size charts are for reference only. Fit may vary depending on the construction and materials.

## APPAREL FEATURES



Put sweat in it's place Tactical Dry wicks moisture away from your skin, helping you stay drier and comfortable.



Your body is an amazing heat source Tactical Degree traps body heat and sweat escape.



Stay cool and comfortable Tactical Cool uses ventilation, moisture management and fabric construction to help aid the release of heat.





## NECK PROTECTOR



[TNG2BA] **NEW**  
**NECK PROTECTOR**

SIZES	SR	S - 2XL
	JR	XS - XL

BNQ and CE Certified  
Cut Resistant Neck  
New comfortable adjustable neck attachment  
Improved raglan style fit  
Moisture wicking fabric  
Odor Resistant

CONTENT 85% Polyester / 15% Spandex

COLOR Black

## COMPRESSION



[TLS2BG] **NEW**  
**LONG SLEEVE TOP WITH GEL APPLICATION**

SIZES	SR	S - 2XL
	JR	S - XL

Anatomical fit  
Breathable Mesh  
Gel Application  
Locker Room Hook  
Writable Name/Number Heat Transfer Label  
Inside Center Back Neck

CONTENT 85% Polyester / 15% Spandex

COLOR Black



[SCJ2BA] **NEW**  
**SHORT WITH JOCK/TABS**

SIZES	SR	S - 2XL
	JR	S - XL

Anatomical fit  
Breathable Mesh  
Locker Room Hook  
Odor Resistant  
Writable Name/Number Heat Transfer Label

CONTENT 85% Polyester / 15% Spandex

COLOR Black



[PCJ2BG] **NEW**  
**PANT WITH GEL APPLICATION / JOCK / TABS**

SIZES	SR	S - 2XL
	JR	S - XL

Anatomical Fit  
Breathable Mesh  
Gel Application  
Locker Room Hook  
Odor Resistant  
Writable Name/Number Heat Transfer Label

CONTENT 85% Polyester / 15% Spandex

COLOR Black



PERFORMANCE COMPRESSION



[TCM2BLS] **NEW**  
**PERFORMANCE  
LONG SLEEVE TOP**

SIZES	SR	S - 2XL
	JR	S - XL

Breathable Mesh  
Moisture Wicking  
Odor Resistant  
4-way Stretch



CONTENT 85% Polyester / 15% Spandex

COLOR Black



[PCM2BA] **NEW**  
**PERFORMANCE  
PANT**

SIZES	SR	S - 2XL
	JR	S - XL

Breathable Mesh  
Moisture Wicking  
Odor Resistant  
4-way Stretch



CONTENT 85% Polyester / 15% Spandex

COLOR Black



[SCM2BA] **NEW**  
**PERFORMANCE  
SHORT**

SIZES	SR	S - 2XL
-------	----	---------

Breathable Mesh  
Moisture Wicking  
Odor Resistant  
4-way Stretch



CONTENT 85% Polyester / 15% Spandex

COLOR Black

PADDED PROTECTION



[TGP2BA] **NEW**  
**PADDED GOALIE  
LONG SLEEVE TOP**

SIZES	SR	S - 2XL
	JR	S/M - L/XL

Breathable Mesh  
Dry and Cool  
Locker Room Hook  
Odor Resistant  
Padded Protection Zones  
Writable Name/Number Heat Transfer  
Label Inside Center Back Neck



CONTENT Body Content: 85% Polyester / 15% Spandex  
Mesh Content: 90% Polyester / 10% Spandex

COLOR Black

NON COMPRESSION



[TNC2BLS] **NEW**  
**LONG SLEEVE TOP**

SIZES SR S - 2XL

Anatomical fit  
Moisture wicking  
Odor Resistant  
Heat transfer label inside center back neck

CONTENT 95% Polyester / 5% Spandex

COLORS Grey



[TNC2BSS] **NEW**  
**SHORT SLEEVE TOP**

SIZES SR S - 2XL

Anatomical fit  
Moisture wicking  
Odor Resistant  
Heat transfer label inside center back neck

CONTENT 95% Polyester / 5% Spandex

COLORS Grey



[PNC2BA] **NEW**  
**LOOSE FIT PANT**

SIZES SR S - 2XL

Anatomical fit  
Moisture wicking  
Odor resistant  
Heat transfer label inside center back below waistband

CONTENT 95% Polyester / 5% Spandex

COLORS Grey





[SCL2BA] **NEW**  
**SHORT  
WITH JILL/TABS**

SIZES WM XS - XL

Anatomical Fit  
Breathable Mesh  
Dry and Cool  
Locker Room Hook  
Odor Resistant  
Includes Pelvic Protector

Writable Name/Number  
Heat Transfer Label  
Inside Center Back  
Below Waistband

CONTENT 85% Polyester / 15% Spandex

COLOR Black



[PCL2BG] **NEW**  
**PANT  
WITH JILL/TABS**

SIZES WM XS - XL

Anatomical Fit  
Breathable Mesh  
Locker Room Hook  
Odor Resistant  
Includes Pelvic Protector  
Writable Name/Number Heat Transfer Label

CONTENT 85% Polyester / 15% Spandex

COLOR Black



***CCM***