

JACKSON

BOOTS & BLADES



TABLE *of* CONTENTS

UPFRONT

- P. 03** The Jackson Advantage
- P. 03** Heat Moldable Fit
- P. 03** Support Ratings
- P. 03** The Jackson Wrap
- P. 04** US/CAN Fit Guide
- P. 04** A Fit For All Feet
- P. 04** Jackson Custom

FEATURES

- P. 05** Dancin' in the Dark: Synergy ReBoot
- P. 07** Heart & Sole: Pro Support+ Insole

FOOTWORK

- P. 09** Reigning Supreme: 5000 Series
- P. 11** Crafting The Perfect Fit
- P. 12** The Rapid Custom Program
- P. 13** Encore, Encore, Leather is Back!: 2000 Series
- P. 15** Your Debut Era: 2000 Series
- P. 17** Flex-ibility: 2000 Series
- P. 19** Toe Pick: Ultima, Apex & Matrix, Oh My!
- P. 21** Welcome to the Matrix
- P. 23** Peak Performance: Apex Blades
- P. 25** Matrix Legacy: Lightweight Performance
- P. 26** Introductory Blades



THE JACKSON ADVANTAGE

...for the love of skating

Legendary Combinations

With our **Heat Moldable Fit System**, heat is used to soften and mold the boots. As the boot cools, it retains the shape of your foot, even in cold climates.



Our **Fusion Sole** is made from a lightweight nylon composite. It is torque resistant and waterproof. The rubber inlay provides a non-slip blade mount & superior shock absorption.



Our **PBX Sole** is flexible yet rigid, offering unmatched lightweight strength. In combination with ABS insoles and a rubber inlay for a non-slip blade mount, this sole boasts a sleek, low-profile look and feel.



The appropriate level of support is critical to skater performance and injury prevention. Selecting a boot that is too stiff for a skater's ability and physical characteristics can drastically impede the flexibility necessary to perform and develop skating skills. It can also result in injury as the skater is unable to properly break in the boot. Conversely, a boot that is too soft will result in a lack of support, impacting performance and can lead to premature breakdown of the product. Our **Support Rating** System makes it easy to select your boot of best fit.



Moderate



Firm



Strong



Ultimate



The Jackson Wrap System

Designed for exceptional fit, the Jackson Wrap System secures your foot, stops internal movements and slipping, and provides better stability. An internal layer of leather provides enhanced strength, support, and comfort. Performance Flex Notch, standard on Jackson Boots minimizes ankle and knee strain on forward flex while improving stability.

Cuff wrap with internal leather reinforcement for strength & support

Graduated instep wrap with **flex notch** to minimize knee/ankle strain while supporting ankle flexibility



Achilles cushion, soft cuff, & U-shape throat for comfort & stability

Shin cushion, tongue support & lace guides for superb comfort & to eliminate lace bite

boots + blades =

Fit Guide

While the chart below is a guideline, product selection should be facilitated by an experienced Skate Technician & an Authorized Jackson Dealer.

	MASS /JUMPS	SINGLES	DOUBLES	TRIPLES/QUADS
BOOTS	Less than 60 lbs/30 kg	Flex Entré	Flex Entré	Debut Synergy Spark
	60 - 115 lbs/30 - 58 kg	Flex Entré Debut	Debut Premiere 5000 Series Synergy Spark Synergy Ignite	Premiere 5000 Series Synergy Spark Synergy Ignite
	More than 115 lbs/58 kg	Entré Debut	Premiere 5000 Series Synergy Spark Synergy Ignite	5000 Series Synergy Ignite Synergy Torch
BLADES	All Skaters	Aspire XP Legacy Matrix Legacy	Legacy Matrix Legacy Apex Advanced Matrix Advanced Matrix RXS	Apex Advanced Matrix Advanced Matrix RXS
COMPLETE SKATES	Less than 60 lbs/30 kg	Elle Freestyle		
	More than 60 lbs/30 kg	Freestyle		

From our point of view, the importance of healthy humans is paramount. We also recognize the **weight** words hold. We have redefined our charts to reflect that, as well as the reality that we craft products that are subject to the rules of physics. Without getting too technical, the values represent the products we suggest given the physical demand that will be expected of them. We believe in providing the best skating experience for everyone, and that strength and power come in all shapes and sizes.



The Figure Skate Company

A Fit For All Feet

A consistent shape and fit extends throughout our product line, making for a seamless transition from our 2000 Series of boots to our 5000 & Synergy Series. Fit is established by the Last, which defines the shape and dimensions of the boot. All Jackson boots are made on the Jackson Elite Performance Last, which provides a much rounder shape in the toes with tighter heels for a competitive fit.

All of our boots are available in Regular (A/B) widths or Wide (C/D) options. Our unique Heat Moldable Fit System allows for our boots to be shaped to each individual skater, offering an excellent heel lock - ideal for those with flat feet - and a product of best fit for a greater variety of feet.

While standard sizes fit most, our Jackson Custom program can build a boot to your exact specifications. We have an extensive inventory of Lasts (AAA to EE) to fit all foot shapes.



We are indebted to the many Jackson athletes who have offered their input on the design features of our boots & blades. Your participation in our performance testing is the foundation of our product development and we are eternally grateful.



#JacksonFamily

Dancin' in the Dark



Reboot

NEW Supreme 6000 Tongue

Microfiber lining

Soft collar

Swarovski crystals

Duraguard toe cap

New Synergy boots now come with the ProSupport+ insole

Interior ankle pads wrap anatomically around the foot

Ankle punch-outs that are molded in
Ultra lightweight 3D-injected lasted quarters

Cut-resistant side panels

Carbon fiber look



SPARK



IGNITE, TORCH

SPARK



6160F



IGNITE



6175



6285



TORCH



6185



6295



Heart & Sole

PROSUPPORT+

FB 7000

Support Redefined

Double Poron pads for increased shock absorption through the heel

Made from bamboo charcoal fabric, which has a far-infrared release rate of >80%, helping with circulation and warmth

Featuring a raised metatarsal pad, offering more cushion to the ball of the foot, especially during impact

A multi-function layer that provides ventilation & deodorization, while offering anti-slip shock absorption

Protective arch support

Firm orthopedic materials to enhance stability

Unique memory layer that, in addition to arch support, aids in correcting alignment, leading to better balance and more comfort

Rigid structural layer wraps the heel for increased support and balance



Reigning Supreme

5000 SERIES



SUPREME 5300



AVAILABLE

SUPREME 5362



AVAILABLE

- Traditional leather or suede upper
- Microfiber lining with memory foam
- *NEW* Supreme 6000 Tongue
- Split leather reinforcements
- Extended instep wrap
- Inlaid Swarovski crystals (Women's)

SUPREME PRO 5320



Get Low

Greater flexibility; Dance & Synchro

SUPREME LOW CUT 5430



SUPREME LOW CUT 5462



RAPID CUSTOM

At Jackson, we build standard uppers that require lasting, sole attachment and finishing. This allows our manufacturing team to modify for a specialized fit.

The **Jackson Rapid Custom** program provides an **expedited solution at a lower cost than a Modified Boot!**

Crafting
the
Perfect
Fit

1. CHOOSE YOUR MODEL

• Synergy

- 5000
- 2000



2. CHOOSE YOUR TONGUE

- 5000
- 6000



3. CHOOSE YOUR SOLE

- Fusion
- PBX



4. CUSTOMIZE THE SHAPE



5. HEAT MOLDABLE FIT SYSTEM

Steps 2 & 3 only available on Synergy or 5000 models

TONGUE CUSTOMIZATIONS

6000



- 2.5 cm thick
- Comfort felt retains strength
- Molded insert prevents lace bite
- Design locks the tongue in place
- Flex design provides support without restriction

5000



- 2 cm thick
- Microfiber lining
- Stiff yet flexible support
- Hooks for increased stability
- Extended soft wings on sides
- Soft dip prevents shin irritation

Encore, Encore!

2000 SERIES

Leather is Back.

Timeless Craftsmanship, Modern Performance;
Reimagined.

- Durable **leather upper** has remarkable flexibility & strength
- Non-abrasive fabric lining is odour-resistant & offers a soft fit
- Extended wrap over the instep provides better fit & security
- Reinforced heel with aluminum plates eliminates sole separation
- Inlaid Swarovski crystals for Women's & Girls' Premiere (2850) & Debut (2550/1)

PREMIERE 2850



PREMIERE 2852



DEBUT 2550/51



Your Debut Era

2000 SERIES

DEBUT 2452 / 2453



- Microfiber upper has remarkable flexibility & strength
- Non-abrasive fabric lining is odour-resistant & offers a soft fit
- Extended wrap over the instep provides better fit and security
- Scratch-resistant Duraguard protection

Get Low

Greater flexibility; Dance & Synchro featuring a black fusion sole

DEBUT LOW CUT 2430



Flex -ibility

2000 SERIES

FLEX 2000 / 2001

- Microfiber upper: flexibility & strength
- Boasts a non-abrasive fabric lining that is odour-resistant & offers a soft fit
- Extended wrap over the instep provides better fit and security
- Scratch-resistant Duraguard protection
- Inlaid Swarovski crystals for Women's & Girls'



...Toe Pick

DIAGONAL-CUT TOE PICKS

8' ROCKER

- Lower drag tooth & lift angle allows for a faster acceleration to the toe pick on jump take-offs

Matrix /
Matrix RXS Freestyle



Apex Freestyle



STRAIGHT-CUT TOE PICKS

8' ROCKER

- Larger second toe pick & slightly higher lift angle than diagonal-cut for added stability on edge jump take-offs

Matrix / Matrix RXS Elite



Apex Elite



Mirage



CROSS-CUT TOE PICKS

8' ROCKER

- Cross-Cut maximizes grip on toe jumps
- The highest lift angle & drag tooth of the 3 blade families, offering the steepest launch angle on edge jumps

Matrix /
Matrix RXS Supreme



Apex Supreme



Matrix Legacy



Legacy Lite 8



Aspire XP



7' ROCKER BLADES

- Higher stanchions on Dance & Synchro blades for greater lean angle provides the advantage of deeper edges
- With the enhanced maneuverability of a 7' rocker, **Legacy Lite 7 is an ideal solution for skaters competing in both Freestyle and Synchro disciplines**

Apex Dance
Cross Cut Pick



Apex Synchro
Straight-Cut Pick



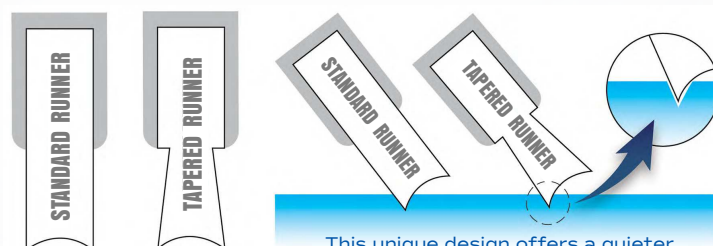
Finesse
Straight-Cut Pick



Legacy Lite 7
Cross-Cut Pick



Superior Edge Control



FEATURED in MATRIX ADVANCED, MATRIX RXS & APEX SERIES

Welcome to the **Matrix**™

Lighter // Faster // Superior Edge Control

**Stainless steel is harder than carbon steel,
therefore more durable & offers a faster glide
with better edge quality.**

The Blade of Glory.
Grand Prix. Worlds. Olympics.
Take your pick.



*Available in SUPREME MX 7156 & ELITE MX 7106

- Ultra Lightweight Aircraft Grade Aluminum Chassis
- Japanese AUS8 Stainless Steel Runner



**SUPREME
MX 7150**

**FREESTYLE
MX 7120**

**ELITE
MX 7105**

Cross-Cut Pick

Diagonal-Cut Pick

Straight-Cut Pick

Matrix™
RXS

Runner Exchange System

As blade height decreases with sharpening, the rocker position is altered. The ability to change runners allows skaters **consistency**, eliminating the need to get accustomed to new blades.

A spare set of sharpened runners provides **convenience**, consistency & confidence.

The runners fit all machines; a clamp is all you need. Same wheel. Same profile. Same great sharpening. Need guidance? Our Skate Technicians look forward to helping you get set-up!



Offerings



Complete Blade



Replaceable Runners
MX 8000



System Kit
MX 8000SK



**SUPREME
MX 8150**

**FREESTYLE
MX 8120**

**ELITE
MX 8105**

Cross-Cut Pick

Diagonal-Cut Pick

Straight-Cut Pick

Peak Performance

APEX 8' ROCKERS

Titanium coating = edge life + exceptional durability.
Technology is our Edge.

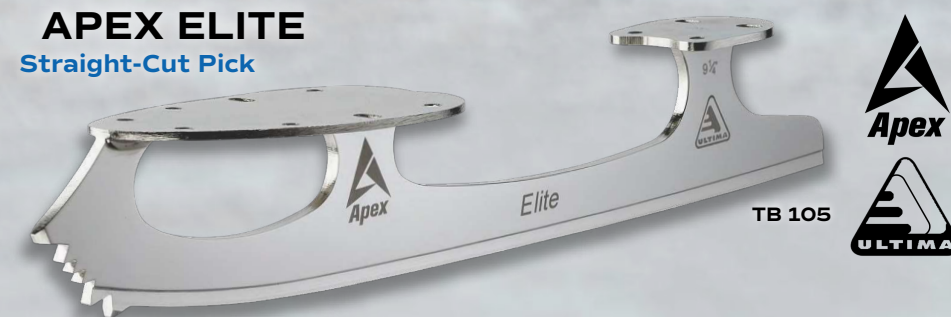
APEX SUPREME Cross-Cut Pick



APEX FREESTYLE Diagonal-Cut Pick



APEX ELITE Straight-Cut Pick



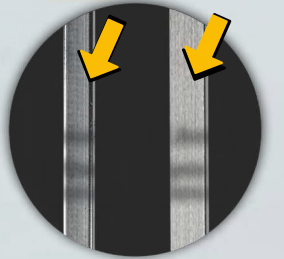
Specialty Blades

APEX 7' ROCKERS

- Enhanced maneuverability
- Cut-out design for lighter weight
- Higher stanchions for greater lean angle provides the advantage of deeper edges

Other
Dance
3mm

Apex
Dance
3.8mm



APEX DANCE Cross-Cut Pick



Wider Runner Base for enhanced stability on Twizzles

APEX SYNCHRO Straight-Cut Pick



The Synchro blade's hybrid design addresses the evolution of the sport, which includes more jumps & technical elements.

FINESSE Straight-Cut Pick



The quintessential Intermediate Dance & Synchro blade

LEGACY SERIES

Matrix™

Legacy

LIGHTWEIGHT PERFORMANCE

Lighter & Faster with the Superior Edge Quality of Stainless Steel.

Cross-Cut Pick



MX 7050

Matrix Legacy is also available in colours:

- Ultra Lightweight Aircraft Grade Aluminum Chassis
- 420J Stainless Steel Runner



Legacy Lite

LEGACY 8
Cross-Cut Pick



UB 80



8' Rocker; Standard Heel

LEGACY 7
Cross-Cut Pick



UB 70



7' Rocker; Standard Heel

Designed in response to a demand by top coaches, our Legacy Lite series features a lightweight cut-out design with a chrome finish: the perfect graduation from our Introductory blades.

INTRODUCTORY BLADES

ASPIRE XP
Cross-Cut Pick



UB 25



The cross-cut pick provides more grip on the ice for toe jumps.

MIRAGE
Straight-Cut Pick



UB 10



MARK IV
Straight-Cut Pick



UB 5



Straight-cut toe pick offers grip with a faster release out of the ice for toe jumps.

#JacksonFamily

Jackson Ultima Skates

505 Thompson Drive, Unit 5
Cambridge, Ontario, Canada N1T 2K7

Tel: 1 - 800 - 263 - 1666

Fax: 1 - 800 - 461 - 8958

Jackson Ultima Europe

Gårdsvägen 13
SE - 16970 Solna, Sweden

Tel: + 46 (0) 8 - 522 352 10



jacksonultima.com



J2025BBPNT

Please note that while every effort has been made to ensure accuracy Jackson Ultima reserves the right to make changes without notice. Colour tones may vary slightly due to fluctuations in the printing process.