

WE ARE HOCKEY

CCM

20
25 CATALOGUE
EUROPE **S2**

MISSION

TO INSPIRE DREAMS

AND EMPOWER EVERY PLAYER

TO FULFILL THEIR PASSION

WHILE ENJOYING THEIR GAME

VISION

TO BE THE LEADING BRAND ON AND OFF THE ICE, BY DELIVERING INNOVATIVE PRODUCTS AND OUTSTANDING EXPERIENCE TO OUR ATHLETES AND PARTNERS EVERYWHERE, ALL WHILE PUTTING OUR EMPLOYEES AND COMMUNITIES AT THE FOREFRONT.



WEBSITE
CCMHOCKEY.COM

TO START YOUR B2B ONLINE SHOPPING, GO TO
WWW.GO2CCMHOCKEY.COM AND CLICK ON "REQUEST LOGIN".

FIND US ON
**SOCIAL
MEDIA**



CCMHOCKEY



@CCMHOCKEY



CCMHOCKEY



@CCM.HOCKEY



CCMHOCKEY

HEAD OFFICE LOCATIONS

NORTH AMERICA

CCM HOCKEY
8275 TRANS-CANADA HIGHWAY,
BUREAU B110
MONTRÉAL, QUÉBEC
H4S 0B6, CANADA
TEL.: (800) 636-5895
FAX: (800) 636-5751

EUROPE

CCM HOCKEY AB
GÅRDSVÄGEN 13
SE 16970 SOLNA
SWEDEN
TEL.: + 46 (0) 8 522 352 00
FAX: + 46 (0) 8 522 352 10

© 2025 SPORT MASKA INC. ALL RIGHTS RESERVED. MAY NOT BE REPRODUCED WITHOUT THE PRIOR WRITTEN CONSENT OF SPORTS MASKA INC.

CCM, TACKS, TACKABERRY, RIBCOR, TRIGGER, JETSPED, FTW, AXIS, EFLEX, STEP, STEPSTEEL, VSTEEL, BLACKSTEEL, JACKSON, SOFTEC, JOFA, KOHO, REVOLUTION, TITAN, CANADIEN, HEATON AND RELATED LOGOS ARE CERTAIN TRADEMARKS OF SPORT MASKA INC.

NHL AND THE NHL SHIELD ARE TRADEMARKS OF THE NATIONAL HOCKEY LEAGUE. ALL NHL LOGOS AND MARKS AND TEAM LOGOS AND MARKS DEPICTED HEREIN ARE THE PROPERTY OF THE NHL AND THE RESPECTIVE TEAMS AND MAY NOT BE REPRODUCED WITHOUT THE PRIOR WRITTEN CONSENT OF NHL ENTERPRISES.

† : THIS CATALOG MAY REFER TO THE FOLLOWING TRADEMARKS WHICH ARE OWNED BY THE COMPANIES WHOSE NAMES APPEAR AFTER THE TRADEMARK: AHL - - AMERICAN HOCKEY LEAGUE; CHL - - CANADIAN HOCKEY LEAGUE; ECHL - - ECHL INC.; D30 - - DESIGN BLUE LTD; SIGMATEX - - SIGMATEX (UK) LIMITED; POLYGIENE - - POLYGIENE AB; FLUID INSIDE - - MIPS AB; ORTHOLITE - - ORTHOLITE; HELICOID - - HELICOID INDUSTRIES INC.; ORTHOMOVE - - ADOMUS GMBH.

WARNING : HOCKEY IS A DANGEROUS COLLISION SPORT. WE RECOMMEND THAT PROTECTIVE EQUIPMENT AND A CERTIFIED HELMET BE WORN AT ALL TIMES. SPORT MASKA INC. RESERVES THE RIGHT TO CHANGE ALL PRODUCT SPECIFICATIONS AND/OR CUSTOM PROGRAMS. WHILE THE INFORMATION SHOWN IN THIS PUBLICATION WAS CORRECT AT THE TIME OF PRINTING, WE RESERVE THE RIGHT TO DISCONTINUE THE SALE OF PRODUCT OR CHANGE SPECIFICATIONS OR DESIGNS WITHOUT NOTICE OR OBLIGATION.

PLAYER STICKS

STICKS..... 6 - 16
MINI STICKS..... 16
NAMEBAR PRINTER..... 17
STICK CURVES..... 17

GOALIE STICKS

GOALIE STICKS..... 18 - 21
GOALIE STICK CURVES..... 21

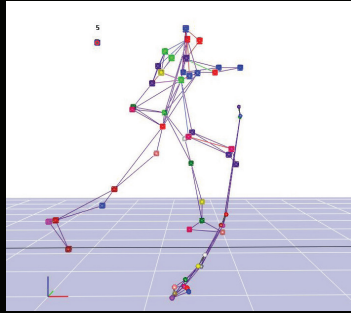
FTW HELMET

HTFTW 22 - 23

APPAREL

..... 24 - 49





CCM PERFORMANCE LAB

RESEARCH AND RETAIL DEVELOPMENT

AT CCM, WE ARE ALWAYS LOOKING TO PUSH INNOVATION. THE STICK CATEGORY RELIES ON ADVANCES IN MECHANICAL ENGINEERING TO ALLOW DATA DRIVEN PERFORMANCE.

71

R&D STUDIES

44 548

SHOTS ANALYSED

4 180

SLASHING/PASSING/STICKHANDLING
TASKS ANALYSED

679

PLAYERS

57

NHL PROS

130

NHL PROSPECTS

NANOLITE SHIELD

INTRODUCING CCM'S LATEST INNOVATION, NANOLITE SHIELD MAXIMIZES THE USE OF CARBON LAYERS IN VARYING THICKNESSES TO ACHIEVE DRASTIC WEIGHT REDUCTION WITHOUT COMPROMISING DURABILITY.

THE REENGINEERED CORE OF CCM'S STICK SHAFTS NOW INCORPORATES EXTREMELY LIGHT CARBON FIBER LAYERS STACKED BETWEEN TWO THICKER, STRONGER LAYERS TO ALLOW FOR IMPORTANT WEIGHT SAVINGS. WITH AN OUTER SHIELD COMPOSED OF UNIDIRECTIONAL CARBON FIBERS AND OUR ELITE SIGMA STP WEAVE, THE STICK IS PROTECTED FROM IN-GAME IMPACTS.

FEATURED IN THE JETSPEED FT6 PRO, THIS NEW DESIGN ENABLES THE STICK TO BE AS DURABLE AS ITS PREDECESSOR, ALL WHILE REDUCING WEIGHT BY AS MUCH AS 15 GRAMS.

OUTER CARBON SHIELD

THICKER CARBON LAYER

THINNER CARBON CORE

THICKER CARBON LAYER



SECTION VIEW

ALUPLI COMPOSITE

KEY DETAILS:

- 1- THIN ALUMINUM PLIES MIXED WITH CARBON LAYERS CREATES A NEW CONCEPT OF **METAL / CARBON HYBRID CONSTRUCTION**
- 2- USED ON OUTWARD LAYERS OF THE SHAFT, ACTING AS A SLASH SHIELD THAT **LIMITS CRACKS PROPAGATION**

MAIN BENEFITS:

- 1- **IMPROVED SLASH TEST RESULTS** BY UP TO 8%
- 2- **REDUCED VISUAL DAMAGE** AND SUBSEQUENT CRACK PROPAGATION BY 20%

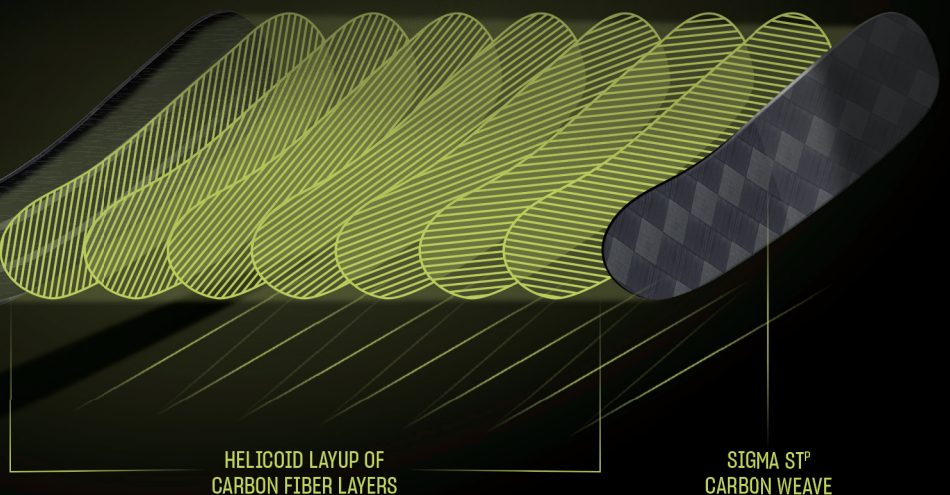


HELICOID
INDUSTRIES INC.

CCM'S PATENTED ELITE BLADE TECHNOLOGY FOR SUPERIOR DURABILITY AND LONGER-LASTING POP.

ACHIEVED THROUGH THE USE OF CARBON LAYERS OPTIMALLY ANGLED IN SMALLER INCREMENTS THAN EVER BEFORE, THIS NEW DESIGN HELPS BETTER DISSIPATE ENERGY COMING FROM IN-GAME IMPACTS, THUS ALLOWING THE BLADE TO KEEP ITS INTEGRITY OVER A LONGER PERIOD OF TIME.

COMBINED WITH OUR SIGMA STP CARBON WEAVE, THE HELICOID® TECHNOLOGY ENABLES PLAYERS TO EXPERIENCE EXCEPTIONNAL SHOOTING PERFORMANCE, SHOT AFTER SHOT.



RIBCOR TRIGGER 10 PRO STICK

INTRODUCING THE TRIGGER 10 PRO, WHERE INNOVATION MEETS PERFORMANCE. EXPERIENCE THE FASTEST RELEASE YET WITH OUR NEWLY CONSTRUCTED SHAFT SHAPE AND REVOLUTIONARY FLEX PROFILE. THE "EC" SHAFT FEATURES A ROUNDED "C" SHAPE MID-SECTION FOR SUPERIOR CONTROL AND A SHARPER LOWER RIB TOWARDS THE TAPER FOR SPEED. OUR REDESIGNED UL1 BLADE REDUCES WEIGHT AND ENHANCES BALANCE, ENSURING YOU PERFORM AT YOUR BEST DURING THE MOST IMPORTANT MOMENTS. THIS INNOVATIVE COMBINATION OF TECHNOLOGY ALLOWS FOR A MORE CONDENSED FLEX PROFILE, INTRODUCING THE GROUNDBREAKING ULTRALOW KICK, MAKING LOADING EASIER WHILE MAINTAINING THE SAME RELIABILITY AND SHOOTING CONSISTENCY FROM PREVIOUS RIBCOR GENERATIONS.

TECH 001

ULTRALOW KICKPOINT

A REDESIGNED KICKPOINT WITH A LOWER AND SHARPER RIB FOR THE FASTEST RELEASE YET.

TECH 002

ERGONOMIC "EC" GEOMETRY

A NEW ERGONOMIC SHAFT WITH A C-SHAPE MID-SECTION TO INCREASE OVERALL STICK COMFORT FOR THE BOTTOM HAND.

TECH 003

UL1 REG BLADE

NEW ULTRALIGHT BLADE DESIGNED TO REDUCE WEIGHT AND IMPROVE THE BALANCE POINT FOR AN EVEN QUICKER RELEASE.

PRODUCT HAS A HOLOGRAPHIC FINISH,
COLORS MAY VARY FROM THE PICTURE

NEW

HSRC10P RIBCOR TRIGGER 10 PRO STICK

SR \$ _____
INT \$ _____
JR \$ _____
YT \$ _____

NAMEBAR TAG

| | |
|------------------|---|
| KICKPOINT | ULTRA-LOW KICK A redesigned kickpoint with a lower and sharper rib for the fastest release yet |
| SHAFT TECHNOLOGY | NANOLITE SHIELD CARBON LAYERING TECHNOLOGY High-performance carbon layering technology which creates a stick that's both incredibly light and strong. |
| SHAFT GEOMETRY | ERGONOMIC "E" GEOMETRY Unique ergonomic geometry designed to offer a seamless energy transfer to maximize speed of release. |
| SHAFT GEOMETRY | ERGONOMIC "EC" GEOMETRY A new Ergonomic shaft with a C-Shape mid-section to increase overall stick comfort for the bottom hand |
| TAPER TECHNOLOGY | SKELETON + Manufacturing technology found in the taper area which provides better reliability in key moments of the game. |
| BLADE | UL1 BLADE New Ultralight Blade designed to reduce weight and improve the balance point for an even quicker release. |
| GRIP | TRIGGER MICROFEEL Updated Trigger curved raised grip to enhance stick feel in hands. |
| MATERIAL | SIGMA ST2X SPREAD TOW SHAFT AND BLADE An improved sigmatex material added to the blade and shaft for greater and consistent material performance |

OFFERING *BOOKING: P29^{1/4}, P28^{1/4}SR - 95 / 62"
P28 / P29SR - 85 / 60" *
P28, P29, P90TMSR - 80 / 60" *
P28, P29, P90TMSR - 75 / 60" *
P28, P29, P90TMSR - 70 / 60" *
P28, P29, P90TMSR - 65 / 60" *
P28, P29, P90TMINT - 65 / 57" *
P28, P29, P90TMINT - 55 / 55" *
P28, P29, P90TMJR - 50 / 54" *
P28 / P29 / P90TMJR - 40 / 51" *
P28 / P29 / P90TMYT - 30 / 48"
P28 / P29YT - 20 / 45"
P28 / P29PRODUCT HAS A HOLOGRAPHIC
FINISH, COLORS MAY VARY
FROM THE PICTURE

HSRC10P - LAUNCH DATE

HSRC9K RIBCOR TRIGGER 9K STICK

SR \$ _____
INT \$ _____
JR \$ _____

• NOT OFFERED IN US MARKETS

NAMEBAR TAG

| | |
|------------------|---|
| KICKPOINT | OPTIMIZED LOW KICKPOINT The perfect low kickpoint, providing quick releases and pop on every single shot. |
| SHAFT TECHNOLOGY | ADVANCED CARBON MATRIX Performance carbon layering technology now combined with Sigmatex spread tow to offer a lighter yet even more durable stick. |
| SHAFT GEOMETRY | ERGONOMIC "E" GEOMETRY Unique ergonomic geometry designed to offer a seamless energy transfer to maximize speed of release. |
| TAPER TECHNOLOGY | SKELETON + Manufacturing technology found in the taper area which provides better reliability in key moments of the game. |
| BLADE | AGILITY BLADE WITH PEEL-PLY A lighter blade that takes stick handling and feel to the next level without any compromise on shots release speed. |
| GRIP | TRIGGER MICROFEEL 2 Trigger curved raised grip to enhance stick feel in hands. |
| MATERIAL | SIGMATEX SPREAD TOW SHAFT AND BLADE |

OFFERING

SR - 95 / 62"
P28 / P29SR - 85 / 60"
P28 / P29 / P90TMSR - 80 / 60"
P28 / P29 / P90TMSR - 75 / 60"
P28 / P29 / P90TMSR - 70 / 60"
P28 / P29 / P90TMINT - 65 / 57"
P28 / P29 / P90TMINT - 55 / 55"
P28 / P29 / P90TMJR - 50 / 54"
P28 / P29 / P90TMJR - 40 / 51"
P28 / P29 / P90TMPRODUCT HAS A HOLOGRAPHIC
FINISH, COLORS MAY VARY
FROM THE PICTURE

RIBCOR STICKS

7
CCM

HSRC9
RIBCOR
TRIGGER 9
STICK

SR \$
INT \$
JR \$
YT \$
NAMEBAR TAG

KICKPOINT
OPTIMIZED LOW KICKPOINT
The perfect low kickpoint, providing quick releases and pop on every single shot.

SHAFT TECHNOLOGY
PURE CARBON TECHNOLOGY
Developed to offer a robust yet lightweight construction for high-performance stick.

SHAFT GEOMETRY
ERGONOMIC "E" GEOMETRY
Unique ergonomic geometry designed to offer a seamless energy transfer to maximize speed of release.

BLADE
AGILITY BLADE WITH PEEL-PLY
A lighter blade that takes stick handling and feel to the next level without any compromise on shots release speed.

MATERIAL
PURE CARBON SHAFT WITH
SIGMATEx BLADE

PRODUCT HAS A HOLOGRAPHIC
FINISH, COLORS MAY VARY
FROM THE PICTURE

OFFERING

- SR - 85 / 60"
P28 / P29 / P90TM
- SR - 75 / 60"
P28 / P29 / P90TM
- SR - 70 / 60"
P28 / P29 / P90TM
- INT - 65 / 57"
P28 / P29 / P90TM
- INT - 55 / 55"
P28 / P29 / P90TM
- JR - 50 / 54"
P28 / P29 / P90TM
- JR - 40 / 51"
P28 / P29 / P90TM

HSRC96
RIBCOR
96K
STICK

SR \$
INT \$

KICKPOINT
LOW KICKPOINT
Engineered low kickpoint to help increase release speed on shots.

SHAFT GEOMETRY
ERGONOMIC "E" GEOMETRY
Unique ergonomic geometry designed to offer a seamless energy transfer to maximize speed of release.

BLADE
ASCENT 2 BLADE
An optimized stiffness profile that transitions seamlessly from softer in the heel to extra stiff in the toe for heightened puck feel and quick releases.

MATERIAL
C6 WEAVE ON BLADE

OFFERING

- SR - 85 / 60"
P28 / P29
- SR - 75 / 60"
P28 / P29
- INT - 65 / 57"
P28 / P29
- INT - 55 / 55"
P28 / P29

HSRC94
RIBCOR
94K
STICK

SR \$
INT \$
JR \$
YT \$

KICKPOINT
LOW KICKPOINT
Engineered low kickpoint to help increase release speed on shots.

SHAFT GEOMETRY
ROUNDED "R" GEOMETRY
Streamlined shape with rounded corners and concave sides that delivers high performance and ultimate comfort.

BLADE
COMPOSITE SITFF BLADE
Carbon and fiberglass blade designed for great durability.

OFFERING

- SR - 85 / 60"
P29
- SR - 75 / 60"
P29
- INT - 65 / 57"
P29
- INT - 55 / 55"
P29
- JR - 50 / 54"
P29
- JR - 40 / 51"
P29
- 30 FLEX / 48"
P29
- 20 FLEX / 45"
P29
- 10 FLEX / 42"
P29



XF GHOST STICK

EXPERIENCE THE PINNACLE OF PRO-LEVEL PERFORMANCE WITH THE XF GHOST, CRAFTED TO MEET THE EXACTING STANDARDS OF TOP PROFESSIONALS. THIS ELITE STICK FEATURES OUR MOST PRO-DEMANDED MID KICK FLEX PROFILE WITH A STIFFER MIDDLE SECTION FOR AN EFFORTLESS AND EXPLOSIVE RELEASE. THE SHAFT ALSO INTRODUCES A UNIQUE PRO RAISED GRIP, OFFERING UNPARALLELED FEEL, COMPLEMENTED BY A "T" SHAFT GEOMETRY. THE NEWLY DEVELOPED BLADE REDUCES WEIGHT WHILE MAINTAINING EXCEPTIONAL PERFORMANCE AND DURABILITY, ENSURING YOU HAVE THE ULTIMATE TOOL FOR DOMINANCE ON THE ICE JUST AS THE PROS DO.

TECH 001

PRO MID KICK

THE #1 PRO DEMANDED MID KICK CONSTRUCTION, WITH A STIFFER MIDDLE SECTION, MADE FOR AN EFFORTLESS & EXPLOSIVE RELEASE

TECH 002

PRO STIFF BLADE

A PRO INSPIRED BLADE CONSTRUCTION DESIGNED FOR THE BEST SHOOTING PERFORMANCE WHEN PAIRED WITH THE PRO MID KICK, ADDING TO AN OVERALL STIFFER FLEX PROFILE

TECH 003

PRO GRIP AND TEXTURE

COMBINING A MORE TRADITIONAL "F" SHAFT WITH A NEW UNIQUE RAISED GRIP FINISHING.

NEW
HSXFGH25
XF GHOST
STICK

SR \$
INT \$
JR \$
YT \$

NAMEBAR TAG

| | | |
|------------------|--|--|
| KICKPOINT | PRO MID KICKPOINT | The #1 Pro demanded mid kick construction made for an effortless release. |
| SHAFT TECHNOLOGY | NANOLITE SHIELD CARBON LAYERING TECHNOLOGY | High-performance carbon layering technology which creates a stick that's both incredibly light and incredibly strong. |
| SHAFT GEOMETRY | "F" GEOMETRY | A shaft with rounded corners for more feel and comfort. Popular at Pro. |
| TAPER TECHNOLOGY | SKELETON + | Manufacturing technology found in the taper area which provides better reliability in key moments of the game. |
| BLADE | PRO STIFF BLADE | A pro inspired blade construction designed for the best shooting performance when paired with the pro mid kick, adding to an overall stiffer flex profile. |
| GRIP | PRO GRIP FINISHING | Bringing forward the most requested grip texture to retail. A new textured raised grip uniquely offered to the best. |
| MATERIAL | SIGMA ST2X SPREAD TOW SHAFT AND BLADE | An improved sigmatex material added to the blade and shaft for greater and consistent material performance. |

OFFERING

SR - 85 / 60"
P28^{1/4}, P29^{1/4}, P90TM
SR - 80 / 60"
P28^{1/4}, P29^{1/4}, P90TM
SR - 75 / 60"
P28^{1/4}, P29^{1/4}, P90TM
SR - 70 / 60"
P28^{1/4}, P29^{1/4}, P90TM
SR - 65 / 60"
P28^{1/4}, P29^{1/4}, P90TM

INT - 65 / 57"
P28^{1/4}, P29^{1/4}, P90TM
INT - 55 / 55"
P28^{1/4}, P29^{1/4}, P90TM
JR - 50 / 54"
P28^{1/4}, P29^{1/4}, P90TM
JR - 40 / 51"
P28^{1/4}, P29^{1/4}, P90TM
YT - 30 / 48"
P28 / P29
YT - 20 / 45"
P28 / P29

PRODUCT HAS A HOLOGRAPHIC FINISH,
COLORS MAY VARY FROM THE PICTURE

HSXFGH25 - LAUNCH DATE

HSXFP TACKS XF PRO STICK

SR
INT
JR
YT
NAMEBAR TAG

KICKPOINT
MODERN MID KICKPOINT
Using a softer mid-section to ensure maximum energy storage when loading the stick, our new modern mid kickpoint has now been optimized for wrist shots, enabling aggressive shooters with even more puck speed and consistency than before.

SHAFT TECHNOLOGY
NANOLITE SHIELD CARBON LAYERING TECHNOLOGY
High-performance carbon layering technology which creates a stick that's both incredibly light and incredibly strong.

SHAFT GEOMETRY
VARIABLE "V" GEOMETRY
Variable shaft geometry allowing for an easier and constant loading of the stick to help increase wrist shot power. Its shape transitions along the shaft ensures maximum comfort and grip.

TAPER TECHNOLOGY
SKELETON +
Manufacturing technology found in the taper area which provides better reliability in key moments of the game.

BLADE
SOFT HELICOID® BLADE
Gain the loading capacity and feel of a soft blade while taking advantage of the Helicoid® technology - an improved method to stack carbon layers for long-lasting performance.

GRIP
SUPERFAST MICROFEEL
Graphic-integrated raised grip on mid-section of the shaft to ensure perfect stick control.

MATERIAL
SIGMA ST® SPREAD TOW SHAFT AND BLADE

OFFERING *BOOKING: P28M, P29M

| | |
|-------------------|-------------------|
| SR - 95 / 62" | INT - 65 / 57" |
| P28 / P29 | P28 / P29 / P90TM |
| SR - 85 / 60" * | INT - 55 / 55" |
| P28 / P29 / P90TM | P28 / P29 / P90TM |
| SR - 80 / 60" * | JR - 50 / 54" |
| P28 / P29 / P90TM | P28 / P29 / P90TM |
| SR - 75 / 60" * | JR - 40 / 51" |
| P28 / P29 / P90TM | P28 / P29 / P90TM |
| SR - 70 / 60" * | YT - 30 / 48" |
| P28 / P29 / P90TM | P29 |

PRODUCT HAS A HOLOGRAPHIC FINISH,
COLORS MAY VARY FROM THE PICTURE

HSXF TACKS XF STICK

SR \$
NAMEBAR TAG

KICKPOINT
MODERN MID KICKPOINT
Using a softer mid-section to ensure maximum energy storage when loading the stick, our new modern mid kickpoint has now been optimized for wrist shots, enabling aggressive shooters with even more puck speed and consistency than before.

SHAFT TECHNOLOGY
PURE CARBON TECHNOLOGY
Developed to offer a robust yet lightweight construction for high-performance stick.

SHAFT GEOMETRY
VARIABLE "V" GEOMETRY
New shaft geometry allowing for an easier and constant loading of the stick to help increase wrist shot power. Its shape transition along the shaft ensures maximum comfort and grip.

TAPER TECHNOLOGY
SKELETON +
Manufacturing technology found in the taper area which provides better reliability in key moments of the game.

BLADE
ACUFEEL BLADE WITH PEEL-PLY
Perfected to achieve the right blend of stiffness and feel, the ACUFEEL blade is stiff enough to deliver accuracy and control, yet softer to improve puck feel.

MATERIAL
PURE CARBON SHAFT WITH SIGMATEX BLADE

OFFERING

| |
|-------------------|
| SR - 85 / 60" |
| P28 / P29 / P90TM |
| SR - 80 / 60" |
| P28 / P29 / P90TM |
| SR - 75 / 60" |
| P28 / P29 / P90TM |
| SR - 70 / 60" |
| P28 / P29 / P90TM |

HSXF70 TACKS XF-70 STICK

SR \$
INT \$
JR \$

KICKPOINT
MID KICKPOINT
Built with a soft mid-section for longer loading periods to store maximum energy, plus a stiff taper zone to boost stability and response.

SHAFT GEOMETRY
SQUARE "T" GEOMETRY
This proven square-shaped design provides players with a traditional feel that provides great grip and control.

BLADE
UAF BLADE WITH GRIT FINISH
Lightweight blade with high torsional and bending stiffness for accurate shooting and passing.

OFFERING

| | |
|----------------|---------------|
| SR - 85 / 60" | JR - 50 / 54" |
| P28 / P29 | P28 / P29 |
| SR - 75 / 60" | JR - 40 / 51" |
| P28 / P29 | P28 / P29 |
| INT - 65 / 57" | |
| P28 / P29 | |
| INT - 55 / 55" | |
| P28 / P29 | |

TACKS STICKS

HSFT8P
JETSPEED
FT8 PRO
STICK

SR
INT
JR
YT

NAMEBAR TAG

KICKPOINT
HYBRID KICKPOINT
Creates a hinge effect so you can load the stick using a perfect blend of speed and response.

SHAFT
TECHNOLOGY
ALUPLI COMPOSITE
Elevated shaft design now combining aluminium layers with carbon fibers to push boundaries of impact resistance.

SHAFT
GEOMETRY
ROUND "R" GEOMETRY
Streamlined shape with rounded corners and concave sides that keeps gaining in popularity. It delivers high performance and ultimate comfort.

TAPER
TECHNOLOGY
SKELETON +
Manufacturing technology found in the taper area which provides better reliability in key moments of the game.

BLADE
SOFT-STIFF EVO BLADE WITH HELICOID®
New generation CCM blade that plays like a mix of the Jetspeed FT6 Pro stiff toe and FT7 Pro softer heel for optimal puck feel and excellent shooting performance.

BOOKING
CURVES
NEW +1/4 INCH PATTERNS
Additional quarter-inch height added to our most popular P28 and P29 curves. Available as booking-only.

GRIP
FT MICROFEEL
Raised grip added on the bottom edges of the shaft's mid-section to ensure perfect control.

MATERIAL
SIGMA ST2X SPREAD TOW SHAFT AND BLADE

OFFERING ***BOOKING: P28^{+1/4}, P29^{+1/4}**

SR - 95 / 62"

P28 / P29

SR - 85 / 60" *

P28 / P29 / P90TM

SR - 80 / 60" *

P28 / P29 / P90TM

SR - 75 / 60" *

P28 / P29 / P90TM

SR - 70 / 60" *

P28 / P29 / P90TM

SR - 65 / 60" *

P28 / P29 / P90TM

INT - 65 / 57" *

P28 / P29 / P90TM

INT - 55 / 55" *

P28 / P29 / P90TM

JR - 50 / 54" *

P28 / P29 / P90TM

JR - 40 / 51" *

P28 / P29 / P90TM

YT - 30 / 48"

P28 / P29

YT - 20 / 45"

P28 / P29

PRODUCT HAS A HOLOGRAPHIC FINISH, COLORS MAY VARY FROM THE PICTURE

HSFTS8
JETSPEED
FT8S
STICK

SR
INT
JR

NAMEBAR TAG

KICKPOINT
HYBRID KICKPOINT
Creates a hinge effect so you can load the stick using a perfect blend of speed and response.

SHAFT
TECHNOLOGY
ADVANCED CARBON MATRIX
Performance carbon layering technology now combining with Sigmatax spread tow to offer a lighter yet sturdier stick.

SHAFT
GEOMETRY
ROUND "R" GEOMETRY
Streamlined shape with rounded corners and concave sides that keeps gaining in popularity. It delivers high performance and ultimate comfort.

TAPER
TECHNOLOGY
SKELETON +
Manufacturing technology found in the taper area which provides better reliability in key moments of the game.

BLADE
RR-95 SOFT BLADE
Lightweight soft blade providing perfect mix of feel, shot speed and control while improving the stick's balance.

GRIP
FT MICROFEEL
Raised grip added on the bottom edges of the shaft's mid-section to ensure perfect control.

MATERIAL
SIGMA STP SPREAD TOW SHAFT AND BLADE

OFFERING

SR - 85 / 60"

P28 / P29 / P90TM

SR - 80 / 60"

P28 / P29 / P90TM

SR - 75 / 60"

P28 / P29 / P90TM

SR - 70 / 60"

P28 / P29 / P90TM

INT - 65 / 57"

P28 / P29 / P90TM

INT - 55 / 55"

P28 / P29 / P90TM

JR - 50 / 54"

P28 / P29 / P90TM

JR - 40 / 51"

P28 / P29 / P90TM

PRODUCT HAS A HOLOGRAPHIC FINISH, COLORS MAY VARY FROM THE PICTURE

HSFT8 / HSFT8L JETSPEED FT8 STICK

SR
INT
JR
NAMEBAR TAG

KICKPOINT
HYBRID KICKPOINT
Creates a hinge effect so you can load the stick using a perfect blend of speed and response.

SHAFT TECHNOLOGY
PURE CARBON TECHNOLOGY
Carbon technology helping create a stick that's both light and strong.

SHAFT GEOMETRY
ROUND "R" GEOMETRY
Streamlined shape with rounded corners and concave sides that keeps gaining in popularity. It delivers high performance and ultimate comfort.

TAPER TECHNOLOGY
SKELETON +
Manufacturing technology found in the taper area which provides better reliability in key moments of the game.

BLADE
JF-90 BLADE
Lightweight stiff blade designed to give a heightened feel for the puck without compromising on shot speed and control.

MATERIAL
PURE CARBON SHAFT WITH SIGMATEX SPREAD TOW BLADE

| OFFERING | BOOKING ONLY |
|-------------------|-------------------|
| SR - 85 / 60" | SR - 95 / 63" |
| P28 / P29 / P90TM | P28 / P29 |
| SR - 75 / 60" | SR - 85 / 63" |
| P28 / P29 / P90TM | P28 / P29 / P90TM |
| SR - 70 / 60" | SR - 75 / 63" |
| P28 / P29 / P90TM | P28 / P29 / P90TM |
| INT - 65 / 57" | INT - 65 / 60" |
| P28 / P29 / P90TM | P28 / P29 / P90TM |
| INT - 55 / 55" | |
| P28 / P29 / P90TM | |
| JR - 50 / 54" | |
| P28 / P29 / P90TM | |
| JR - 40 / 51" | |
| P28 / P29 / P90TM | |

PRODUCT HAS A HOLOGRAPHIC FINISH, COLORS MAY VARY FROM THE PICTURE

HSJ880 JETSPEED FT 880 STICK

SR
INT
JR

KICKPOINT
HYBRID KICKPOINT
Creates a hinge effect so you can load the stick using a perfect blend of speed and rspnse.

SHAFT GEOMETRY
ROUND "R" GEOMETRY
Streamlined shape with rounded corners and concave sides that keeps gaining in popularity. It delivers high performance and ultimate comfort.

BLADE
JS4 BLADE
Redesigned mid-performance stiff blade offering a great balance between puck feel and shot speed.

MATERIAL
18K WEAVE BLADE

| OFFERING |
|----------------|
| SR - 85 / 60" |
| P28 / P29 |
| SR - 75 / 60" |
| P28 / P29 |
| INT - 65 / 57" |
| P28 / P29 |
| INT - 55 / 55" |
| P28 / P29 |
| JR - 50 / 54" |
| P28 / P29 |
| JR - 40 / 51" |
| P28 / P29 |

HSJ860 JETSPEED FT 860 STICK

SR
INT
JR

KICKPOINT
HYBRID KICKPOINT
Creates a hinge effect so you can load the stick using a perfect blend of speed and response.

SHAFT GEOMETRY
SQUARE "T" GEOMETRY
Proven square-shaped design that provides players with a traditional feel for great grip and control.

BLADE
COMPOSITE SITFF BLADE
Carbon and fiberglass blade designed for great durability.

| OFFERING |
|----------------|
| SR - 85 / 60" |
| P28 |
| SR - 75 / 60" |
| P28 |
| INT - 65 / 57" |
| P28 |
| INT - 55 / 55" |
| P28 |
| JR - 50 / 54" |
| P28 |
| JR - 40 / 51" |
| P28 |

JETSPEED STICKS

HSJS7Y JETSPEED FT YOUTH STICK

SHAFT

YOUTH GEOMETRY
Designed to help kids learn how to hold their stick and develop their stickhandling and shooting technique

BLADE

STIFF COMPOSITE PAINTED BLADE
Blade stiffness that helps younger players lift the puck while allowing enough puck feel for stickhandling and passing

GRIP

FULL GRIP
Full grip to help with control and feel.

OFFERING

30 FLEX / 48"

P29

20 FLEX / 45"

P29

10 FLEX / 42"

P29

HSFTW24 JETSPEED FTW STICK

SR

INT

JR

NAMEBAR TAG

KICKPOINT

HYBRID KICKPOINT
Experience the ultimate fusion of power and accuracy with the hybrid kickpoint - designed to elevate your game to the next level.

SHAFT
TECHNOLOGY

ADVANCED CARBON MATRIX
Performance carbon layering technology now combining with Sigmatax spread tow to offer a lighter yet sturdier stick.

SHAFT
GEOMETRY

ROUND "R" GEOMETRY
Streamlined shape with rounded corners and concave sides that keeps gaining in popularity. It delivers high performance and ultimate comfort.

TAPER
TECHNOLOGY

SKELETON +
Manufacturing technology found in the taper area which provides better reliability in key moments of the game.

BLADE

RR-95 SOFT BLADE WITH PEEL-PLY
Newly developed soft blade providing perfect mix of feel, shot speed and control.

GRIP

FT MICROFEEL (SR/INT)
Raised grip added on the bottom edges of on the mid-section of the shaft to ensure perfect stick control.

MATERIAL

SR/INT: SIGMATEX SPREAD TOW SHAFT AND BLADE
JR: PURE CARBON TOW SHAFT AND SIGMATEX BLADE

OFFERING

SR - 70 / 60"

P28 / P29

INT - 65 / 60"

P28 / P29

INT - 60 / 58"

P28 / P29

INT - 55 / 58"

P28 / P29

JR - 50 / 54"

P28 / P29

JR - 40 / 51"

P28 / P29

PRODUCT HAS A HOLOGRAPHIC FINISH, COLORS MAY VARY FROM THE PICTURE



FT8 PRO CUSTOM COLORS STICKS

JETSPEED FT8 PRO STICKS

BOOKING ONLY
RED - HSFT8PCR
BLUE - HSFT8PCB
CHARCOAL - HSFT8PCC

MINIMUM ORDER OF 12 PER COLOR
WHEN ORDERING.

NAMEBAR TAG

KICKPOINT

HYBRID KICKPOINT

Creates a hinge effect so you can load the stick using a perfect blend of speed and response.

SHAFT TECHNOLOGY

ALUPLI COMPOSITE

Elevated shaft design now combining aluminium layers with carbon fibers to push boundaries of impact resistance.

SHAFT GEOMETRY

ROUND "R" GEOMETRY

Streamlined shape with rounded corners and concave sides that keeps gaining in popularity. It delivers high performance and ultimate comfort.

TAPER TECHNOLOGY

SKELETON +

Manufacturing technology found in the taper area which provides better reliability in key moments of the game.

BLADE

SOFT-STIFF EVO BLADE WITH HELICOID®

New generation CCM blade that plays like a mix of the Jetspeed FT6 Pro stiff toe and FT7 Pro softer heel for optimal puck feel and excellent shooting performance.

BOOKING CURVES

NEW +1/4 INCH PATTERNS

Additional quarter-inch height added to our most popular P28 and P29 curves. Available as booking-only.

GRIP

FT MICROFEEL

Raised grip added on the bottom edges of the shaft's mid-section to ensure perfect control.

MATERIAL

SIGMA ST2X SPREAD TOW SHAFT AND BLADE

OFFERING

SR - 85 / 60"

P28^{1/4}, P29^{1/4}, P90TM

SR - 80 / 60"

P28^{1/4}, P29^{1/4}, P90TM

SR - 75 / 60"

P28^{1/4}, P29^{1/4}, P90TM

SR - 70 / 60"

P28^{1/4}, P29^{1/4}, P90TM

SR - 65 / 60"

P28^{1/4}, P29^{1/4}, P90TM

INT - 65 / 57"

P28^{1/4}, P29^{1/4}, P90TM

INT - 55 / 55"

P28^{1/4}, P29^{1/4}, P90TM

JR - 50 / 54"

P28^{1/4}, P29^{1/4}, P90TM

JR - 40 / 51"

P28^{1/4}, P29^{1/4}, P90TM

PRODUCT HAS A HOLOGRAPHIC
FINISH, COLORS MAY VARY
FROM THE PICTURE

CUSTOM STICKS

15

CCM

HSULT23 ULTIMATE STICK

*ALSO RECOMMENDED
FOR STREET HOCKEY

SR

JR

YT

OFFERING

SR - P29
JR - P29
YT - P29

SHAFT
TECHNOLOGY

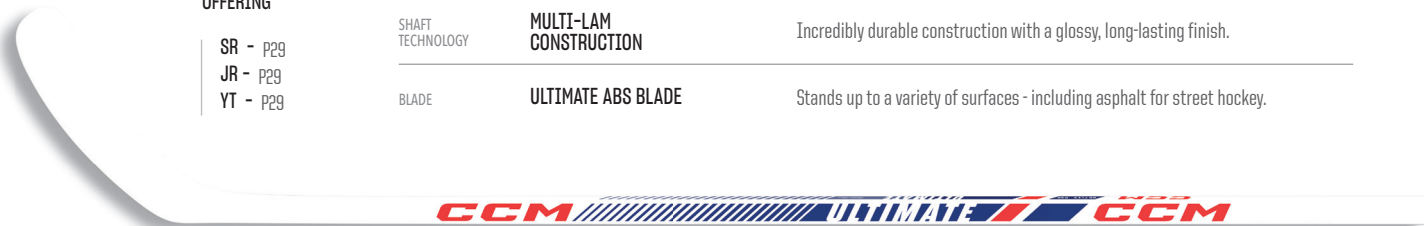
MULTI-LAM
CONSTRUCTION

Incredibly durable construction with a glossy, long-lasting finish.

BLADE

ULTIMATE ABS BLADE

Stands up to a variety of surfaces - including asphalt for street hockey.



ENDPLUFTR - SR “R” SHAPE END PLUG

4 inch “R” shape composite endplug

ENDPLUFTI - INT “I” SHAPE END PLUG

4 inch “I” shape composite endplug

HSNAMEP NAMEBAR PRINTER

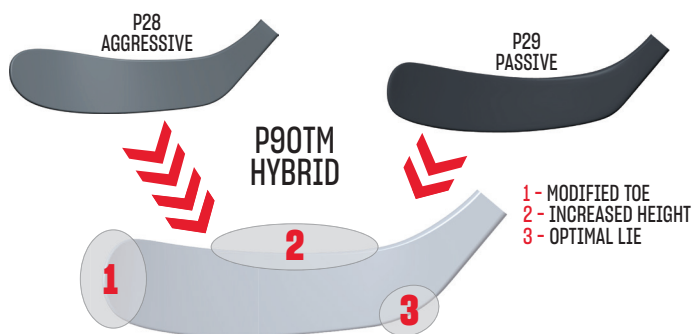
A RETAIL TOOL THAT ALLOWS PLAYERS TO HAVE THEIR NAME PERMANENTLY PRINTED ON THEIR STICK, JUST LIKE THE PROS.

HOW IT WORKS:

- 1) Simply type in the name of the player.
- 2) Press the printer on the namebar and release the trigger.
- 3) Slowly move the printer downwards.

HSNAMEI REPLACEMENT INK CARTRIDGE





P90TM CURVE EVALUATION

POPULAR WITH OUR PRO PLAYERS, THE NEW P90TM BLENDS THE P28 AND THE P29 CURVES AND A SUBTLE TOE CURVE. COMBINED WITH A MAX HEIGHT AND A LOWER LIE, THIS IS IDEAL FOR THE PLAYER LOOKING FOR AN EDGE ON FACE-OFFS OR TO HELP TIPPING PUCKS IN THE AIR.



POSITION MID/TOE



SIZE BIG

OPENESS OPENED

DESCRIPTION

Aggressive curve for players who can shoot from the toe with their hands in front of their body.

P28 (186-2)

FORMER CCM MCDAVID
BAUER P28 / WARRIOR W28 /
EASTON E28 / TRUE TC4



POSITION MID



SIZE BIG

OPENESS OPENED

DESCRIPTION

All-in-one curve with lower lie for players who are straighter when passing and shooting.

P29 (203-2)

FORMER CCM CROSBY
BAUER P29 / WARRIOR W03 / TRUE TC2 /
EASTON E/P3 / SHERWOOD PP26



POSITION MID



SIZE BIG

OPENESS OPENED

DESCRIPTION

Perfect blend of P28 aggressive toe and P29 dual lie with a max height feature.

P90TM (202-2)



POSITION MID



SIZE MEDIUM

OPENESS CLOSED

DESCRIPTION

Traditional curve that is perfect for stickhandling and shot control.

P88 (184-1)

FORMER CCM OVECHKIN
BAUER P88, WARRIOR W88,
EASTON E36, TRUE MC

CCM XF PRO STICK

MAKING ITS ENTRANCE ON THE ICE IS THE NEW CCM XF PRO, THE ULTIMATE GOALIE STICK THAT WILL GIVE YOU THE CONFIDENCE TO TAKE ON ANY SHOT AND MAKE THE SAVE OF THE GAME. THE XF PRO ENABLES LIGHTNING-FAST MOVEMENT AND PERFECT CONTROL, ALLOWING YOU TO MAKE SPLIT-SECOND DECISIONS AND MOVE WITH SHARP REFLEXES. THE SQUARE 'T' SHAPE AT THE TOP OF THE SHAFT TRANSFORMS IN A 'V' SHAPE NEAR THE PADDLE TO PROVIDE INCREASED COMFORT AND STABILITY, PREVENTING STICK ROTATION WHEN MAKING STICK SAVES. WE DIDN'T STOP THERE. THE NEW STEEP SHOULDER PADDLE SHAPE OF THE STICK IMPROVES YOUR HAND POSITION, GIVING YOU MAXIMUM LEVERAGE AND CONTROL OVER THE PUCK. YOU'LL BE ABLE TO MAKE LIGHTNING-QUICK SAVES AND KEEP YOUR TEAM IN THE GAME, NO MATTER WHAT THE COMPETITION THROWS YOUR WAY.

TECH 001

ONE PIECE PADDLE-BLADE

COMPLETELY REDESIGNED PADDLE GEOMETRY NOW BUILT IN A SINGLE MOLE WITH THE BLADE, PROVIDING BETTER MATERIAL DISTRIBUTION AND INCREASED DURABILITY.

TECH 002

VARIABLE "V" GEOMETRY WITH SHORTER SHAFT

UNIQUE DOUBLE GEOMETRY ON THE SHAFT THAT ENSURES TOTAL CONTROL WHEN PLAYING THE PUCK WHILE REDUCING STICK TWIST WHEN MAKING STICK SAVES.

TECH 003

STEEP SHOULDER (SR) & DOUBLE STEEP SHOULDERS (INT)

NEW PADDLE SHOULDER GEOMETRY IMPROVES HAND POSITION.

TECH 004

NEW PATTERN OFFERING

NOW OFFERING BOTH P1 AND P4 CURVES WITH SQUARE TOE FOLLOWING GOALTENDERS' PREFERENCES

PRODUCT HAS A HOLOGRAPHIC FINISH, COLORS MAY VARY FROM THE PICTURE.



HSGXFPC / HSGXFPP XF PRO STICKS

NAMEBAR TAG

BOOKING ONLY

HSGXFPP - P1

| | | | |
|------------|--------------------|--------------|------------------------|
| LEFT - SR | 24", 25", 26", 27" | LIGHT / DARK | STEEP SHOULDERS |
| LEFT - INT | 23" | LIGHT / DARK | DOUBLE STEEP SHOULDERS |

HSGXFPC - P4 *BOOKING ONLY - DARK

| | | | |
|-------------|--------------------|---------------|------------------------|
| LEFT - SR | 24", 25", 26", 27" | LIGHT / *DARK | STEEP SHOULDERS |
| LEFT - INT | 23" | LIGHT / *DARK | DOUBLE STEEP SHOULDERS |
| RIGHT - SR | 24", 25", 26", 27" | LIGHT | STEEP SHOULDERS |
| RIGHT - INT | 23" | LIGHT | DOUBLE STEEP SHOULDERS |

| | | |
|-------------------------|--|---|
| PADDLE-BLADE TECHNOLOGY | ONE PIECE PADDLE-BLADE | Completely redesigned paddle geometry now built in a single mold with the blade, providing better material distribution and increased durability. |
| STICK TECHNOLOGY | NANOLITE SHIELD CARBON LAYERING | Cutting-edge technology that uses variable carbon fiber layers to create a lighter stick without sacrificing on durability. |
| FLEX PROFILE | NEW HIGH FLEX PROFILE | Combining a stiffer paddle and a softer shaft, this new flex profile has been developed to enable easier puck stopping along the board and zone clearances when needed. |
| SHOULDER SHAPE | STEEP SHOULDER (SR) & DOUBLE STEEP SHOULDERS (INT) | New paddle shoulder geometry to improve hand position. |
| SHAFT GEOMETRY | VARIABLE "V" GEOMETRY WITH SHORTER SHAFT | Unique double geometry on the shaft that ensures total control inside or outside the crease while reducing stick twist. |
| MATERIAL | FULL SIGMATEX CONSTRUCTION | |



HSGXFC / HSGXFP XF STICKS

NAMEBAR TAG

BOOKING ONLY

HSGXFP - P1

| | | | |
|-----------|--------------------|--------------|-----------------|
| LEFT - SR | 24", 25", 26", 27" | LIGHT / DARK | STEEP SHOULDERS |
|-----------|--------------------|--------------|-----------------|

HSGXFC - P4 *BOOKING ONLY - DARK

| | | | |
|-------------|--------------------|---------------|------------------------|
| LEFT - SR | 24", 25", 26", 27" | LIGHT / *DARK | STEEP SHOULDERS |
| LEFT - INT | 23" | LIGHT / *DARK | DOUBLE STEEP SHOULDERS |
| LEFT - JR | 21" | LIGHT / *DARK | DOUBLE STEEP SHOULDERS |
| RIGHT - SR | 24", 25", 26" | LIGHT | STEEP SHOULDERS |
| RIGHT - INT | 23" | LIGHT | DOUBLE STEEP SHOULDERS |
| RIGHT - JR | 21" | LIGHT | DOUBLE STEEP SHOULDERS |

| | | |
|-------------------------|---|---|
| PADDLE-BLADE TECHNOLOGY | ONE PIECE PADDLE-BLADE | Completely redesigned paddle geometry now built in a single mold with the blade, providing better material distribution and increased durability. |
| STICK TECHNOLOGY | PURE CARBON TECHNOLOGY | Carbon technology helping create a stick that's both light and strong. |
| FLEX PROFILE | NEW HIGH FLEX PROFILE | Combining a stiffer paddle and a softer shaft, this new flex profile has been developed to enable easier puck stopping along the board and zone clearances when needed. |
| SHOULDER SHAPE | STEEP SHOULDER (SR) & DOUBLE STEEP SHOULDERS (INT-JR) | Improves hand position and reduces weight. |
| SHAFT GEOMETRY | VARIABLE "V" GEOMETRY WITH SHORTER SHAFT | Unique double geometry on the shaft that ensures total control inside or outside the crease while reducing stick twist. |
| MATERIAL | PURE CARBON SHAFT AND PADDLE WITH SIGMATEX BLADE | |



HSGXF70C
XF-70
STICKS

| HSGXF70C - P4 | | | |
|---------------|---------------|------|------------------------|
| LEFT - SR | 24", 25", 26" | DARK | STEEP SHOULDERS |
| LEFT - INT | 23" | DARK | DOUBLE STEEP SHOULDERS |
| LEFT - JR | 21" | DARK | DOUBLE STEEP SHOULDERS |
| RIGHT - SR | 24", 25", 26" | DARK | STEEP SHOULDERS |
| RIGHT - INT | 23" | DARK | DOUBLE STEEP SHOULDERS |
| RIGHT - JR | 21" | DARK | DOUBLE STEEP SHOULDERS |

| | | |
|-------------------|---|---|
| PADDLE TECHNOLOGY | REVAMPED PADDLE CONSTRUCTION | Redesigned and improved paddle construction based on previous strength with significant durability and feel improvements. |
| FLEX PROFILE | NEW HIGH FLEX PROFILE | Combining a stiffer paddle and a softer shaft, this new flex profile has been developed to enable easier puck stopping along the board and zone clearances when needed. |
| SHAFT GEOMETRY | SQUARE SHAPE GEOMETRY | Traditional square-shaped shaft for control while making saves and handling the puck. |
| MATERIAL | UD CARBON & FIBERGLASS ON SHAFT AND BLADE | |



OFFERING

P4 - L/R
YT: 20" / 18"
COLORS
WHITE / BLACK

HSEFYT
EFLEX YOUTH
STICKS

YT \$

| | | |
|---------------------------|--------------------------------|---|
| SHAFT AND PADDLE GEOMETRY | ADAPTED YOUTH SHAFT AND PADDLE | Durable yet lightweight, the shaft and paddle are designed to help smaller hands grip their stick the right way so that they can better hold onto it when making their first saves. |
| BLADE GEOMETRY | ADAPTED YOUTH BLADE | Designed with the next generation of goalies in mind, the adapted blade allows the stick to lie correctly on the ice to ease kids' stability and help them stop more pucks. |



CUSTOMIZER

PLEASE VISIT FOR
MORE INFORMATION: **CCMHOCKEY.COM/EN/PRODUCT/GOALIE/CUSTOMIZER**
PLEASE ASK YOUR REP TO BOOK CUSTOM STICKS (BOOKING CUSTOMIZER)

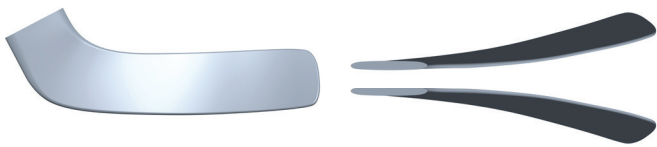
COMPOSITE

XF PRO

HSGXFPSP



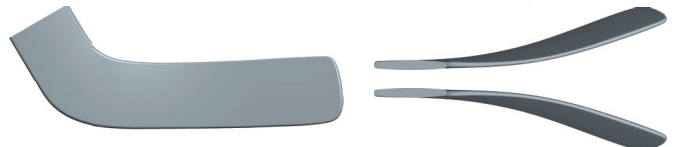
GOALIE CURVE CHART



P1 (142-3)

POSITION HEEL
SIZE MEDIUM
OPENESS VERY OPENED

BENEFITS FOR GOALIES WHO LIKE TO CLEAR THE ZONE IN THE AIR AND/OR OFF THE GLASS



P4 (182-2)

POSITION HEEL
SIZE BIG
OPENESS SLIGHTLY OPENED

BENEFITS DEEP CURVE TO HELP MOVE THE PUCK UP QUICKLY

FTW

FIT DEVELOPED FOR THE SHAPE OF THE FEMALE HEAD.

MADE FOR HER

INTRODUCING THE NEW CCM FTW HELMET, COMPLETING THE FULL HEAD-TO-TOE FTW PLAYER EQUIPMENT OFFERING. DESIGNED SPECIFICALLY

FOR WOMEN, TO PROVIDE IMPROVED FIT, COMFORT AND PROTECTION, WHILE ALSO ENHANCING THEIR COOL FACTOR ON THE ICE.

TECH 001

FTW SPECIFIC FIT & SIZING

THE FIRST OF ITS KIND - A HOCKEY HELMET WITH AN INTERIOR FIT DEVELOPED FOR THE FEMALE HEAD. AFTER THOROUGH SCIENTIFIC RESEARCH SHOWING DIFFERENCES BETWEEN THE HEAD SHAPES OF MEN AND WOMEN AFTER AGE 12, CCM DESIGNED A NEW FIT AND SIZE RANGE TO BETTER FIT WOMEN SO THEY CAN PLAY IN COMFORT AND SAFETY LIKE NEVER BEFORE.

OCCIPITAL+



TECH 002

NEW R3FLEX PROTECTION

BUILT WITH THE SAME COMPONENTS AS THE LATEST CCM TACKS 920 ELITE HELMET, THE FTW HELMET ALSO FEATURES OUR NEW INNOVATIVE, 3-IN-1 FOAM TO WRAP THE HEAD IN ALL AROUND COMFORT, WHILE PROVIDING RELIABLE DYNAMIC PROTECTION THAT RESPONDS TO ALL TYPES OF IMPACTS IN THE GAME. THIS CONFORMING LINER COMBINES INSTANT AND LASTING COMFORT WITH TRUSTWORTHY IMPACT MANAGEMENT.



TECH 003

FULL AER-TEC THERMOREGULATION SYSTEM

THE CCM FTW HELMET FEATURES CCM'S FULLY INTEGRATED AER-TEC THERMOREGULATION SYSTEM TO GUIDE FRESH AIR THROUGHOUT THE HELMET AND PUSH HEAT OUT THROUGH THE TOP AND REAR VENTS.

3D PRINTED NEST TECH LATTICE SECTIONS ARE STRATEGICALLY POSITIONED BEHIND THE ENLARGED SHELL OPENINGS TO ALLOW MORE COOL AIR IN, WHILE BUILT-IN AER-TEC VENTILATION CHANNELS HELP THAT FRESHNESS FLOW THROUGH THE HELMET AS YOU PLAY. ANY EXCESS SWEAT AT THE FOREHEAD IS WICKED AWAY BY THE AER-TEC TOTALDRI SWEATBAND.

BY OPTIMIZING AIR CIRCULATION AND SWEAT EVAPORATION TO REGULATE BODY TEMPERATURE, SCIENCE SHOWS* YOU WILL STAY COOLER AND BE ABLE TO MAKE FASTER GAME-CHANGING DECISIONS.



**NEST
TECH**



TECH 004

NEW SHELL DESIGN

ADPTFIT 360

OUR NEWEST SHELL OFFERS A SLEEK CLOSE-TO-THE-HEAD SHAPE WITH ENHANCED VENTING AND A NEW ADPTFIT 360 EASY-TO-USE 1-STEP ADJUSTMENT SYSTEM AT THE BACK TO ENSURE A SNUG FIT.



22

CCM

CCM'S INDUSTRY-LEADING TEAM OF ENGINEERS, PRODUCT MANAGERS AND DESIGNERS ARE FOCUSED ON DEVELOPING HELMETS THAT ARE SAFE. SCIENTISTS INDICATE THAT BRAIN INJURIES AND CONCUSSIONS ARE MAINLY DUE TO LINEAR AND ROTATIONAL ACCELERATIONS OF THE BRAIN BUT SCIENCE HAS YET TO REACH A CONSENSUS ON THE QUESTION. NO HOCKEY HELMET CAN PREVENT OR ELIMINATE THE RISK OF HEAD INJURY, INCLUDING CONCUSSIONS

IN COLLABORATION WITH THE UNIVERSITY OF OTTAWA, CCM DEVELOPED A TESTING PROTOCOL TO MEASURE HOCKEY PLAYERS' PERFORMANCE DROP DUE TO OVERHEATING DURING PLAY. RESULTS* SHOW PLAYERS WEARING AER-TEC EQUIPMENT NOT ONLY HAVE COOLER SKIN TEMPERATURE, BUT ALSO PERFORM BETTER (SKATE FASTER, MAKE THE RIGHT DECISIONS FASTER). *COMPARED TO PLAYERS WEARING TRADITIONAL HOCKEY EQUIPMENT IN THE SAME CONDITIONS.



NEW
HTFTW / HTFTWC
CCM FTW HELMET

| SIZES | HAT SIZES | HELMET | COMBO |
|-------|------------------------------|--------|-------|
| XS/S | 49 - 56 CM / 6 1/4 - 7 | \$ | \$ |
| M/L | 53.5 - 60 CM / 6 3/4 - 7 1/2 | | |

| | | |
|------------|--|---|
| PROTECTION | R3FLEX PROTECTION + NEST TECH FOR ELITE LEVEL PLAYERS | 3-in-1 full coverage multipurpose comfort liner with dynamic response to help manage all types of impacts: 1) High energy impact shock absorption 2) Low energy impact cushioning 3) Adapts & conforms to the shape of the head |
| COMFORT | FTW FIT + AER-TEC VENTILATION + TOTALDRI | Interior developed specifically for the shape of the female head, featuring thermoregulation with strategically placed 3D printed NEST TECH lattice sections whose built-in ventilation channels guide fresh air throughout, along with R3FLEX Protection cushioned liner, plus a breathable AER-TEC sweatband* to wick moisture away and help manage sweat at the forehead. *personalizable & removable for easy washing |
| ADJUSTMENT | ADPTFIT 360 TOOL-FREE ADJUSTMENT SYSTEM + OCCIPITAL+ | Wraps head length and width in one easy step at the back, with extended size range while the integrated hair groove in the occipital+ cushion help lock helmet in place comfortably. |
| SHELL | STREAMLINED NEW SHELL WITH ENHANCED VENTING TO BRING COOL AIR IN & HELP GUIDE HEAT OUT | A pro-approved look to elevate your game and pass every mirror test, while keeping you looking & feeling fresh. |

COLORS

| | | | | |
|-----|-----|-----|-----|-----|
| | | | | |
| BLK | WHT | NVY | RYL | RED |

* Available as combo
* Offered as a combo with FM580 (S-M) in Black

BOOKING ONLY

* **REPLACEMENT SWEATBANDS** also sold separately (ACCHTSWB - pkg of 2)

* **PERSONALIZATION LOGO STICKERS** (ACCHTSTA in various colors).



IN STOCK



HERITAGE COLLECTION

HOODIE FHO50A

CONTENT: 70% COTTON, 30% POLYESTER

SIZES: S, M, L, XL, 2XL



12 BLACK



108 BLANC DE BLANC



T9 TRUE NAVY



U6 ATHLETIC GREY

T-SHIRT TSS50A

CONTENT: 48% COTTON, 32% RAYON, 20% POLYESTER

SIZES: S, M, L, XL, 2XL



12 BLACK



108 BLANC DE BLANC



T9 TRUE NAVY



U6 ATHLETIC GREY

BOOKING ONLY



VINTAGE COLLECTION

HOODIE FHO58A

CONTENT: 60% COTTON, 40% POLYESTER

SIZES: S, M, L, XL, 2XL

YOUTH SIZES: XS, S, M, L, XL



227 CLASSIC NAVY



221 LIGHT GREY MELANGE



229 IRON



CUFFED JOGGER

PFP58B

CONTENT: 60% COTTON, 40% POLYESTER

SIZES: S, M, L, XL, 2XL

YOUTH SIZES: XS, S, M, L, XL



227 CLASSIC NAVY



WOMENS HOODIE FHO58B

CONTENT: 60% COTTON, 40% POLYESTER

SIZES: XS, S, M, L, XL



221 LIGHT GREY MELANGE



228 DUSTY PINK

T-SHIRT TSS58A

CONTENT: 100% COTTON

SIZES: S, M, L, XL, 2XL

YOUTH SIZES: XS, S, M, L, XL



227 CLASSIC NAVY



228 DUSTY PINK



213 RIVIERA



CREW NECK FCR58A

CONTENT: 86% COTTON, 14% POLYESTER

SIZES: S, M, L, XL, 2XL

YOUTH SIZES: XS, S, M, L, XL



229 IRON



213 RIVIERA



POM KNIT HPM58A

CONTENT: 40% ACRYLIC, 30% POLYESTER, 30% POLYAMIDE
SIZES: ONE SIZE FITS ALL



227 CLASSIC NAVY



229 IRON



VINTAGE COLLECTION

HIGH CUFFED BEANIE HHI58A

CONTENT: 40% ACRYLIC, 30% POLYESTER, 30% POLYAMIDE
SIZES: ONE SIZE FITS ALL



227 CLASSIC NAVY



229 IRON

MESHBACK TRUCKER HTR58A

CONTENT: 54% POLYESTER, 46% COTTON
SIZES: ADULT + YOUTH



227 CLASSIC NAVY



229 IRON

BOOKING ONLY



WINTER COLLECTION

HOODIE FHO57A

CONTENT: 60% COTTON, 40% POLYESTER

SIZES: S, M, L, XL, 2XL



12 BLACK

173 DARK CHERRY

T-SHIRT TSS57A

CONTENT: 64% COTTON, 36% POLYESTER

SIZES: S, M, L, XL, 2XL

YOUTH SIZES: XS, S, M, L, XL



12 BLACK / 01 WHITE

SWEATSHIRT FCR57A

CONTENT: 60% COTTON, 40% POLYESTER

SIZES: S, M, L, XL, 2XL



221 LIGHT GREY MELANGE



206 VETIVER



221 LIGHT GREY MELANGE



UGLY SWEATER WUS57A

CONTENT: 100% ACRYLIC
SIZES: S, M, L, XL, 2XL

COMING SOON

48 DARK HEATHER GREY

SHERPA VEST VSH57A

CONTENT: 100% POLYESTER
SIZES: S, M, L, XL, 2XL



12 BLACK





BASEBALL CAP HLW57A

CONTENT: 100% COTTON
SIZES: ONE SIZE FITS ALL



08 BLUE



205 VEVITER

MESHBACK TRUCKER HTR57B

CONTENT: 73% POLYESTER, 27% COTTON
SIZES: ONE SIZE FITS ALL



173 DARK CHERRY

HTR57A



12 BLACK





POM KNIT HPM57A

CONTENT: 40% ACRYLIC, 30% POLYESTER, 30% POLYAMIDE
SIZES: ONE SIZE FITS ALL



12 BLACK

POM KNIT HPM57B

CONTENT: 40% ACRYLIC, 30% POLYESTER, 30% POLYAMIDE
SIZES: ONE SIZE FITS ALL



08 BLUE

WATCHMAN BEANIE

HWB57A

CONTENT: 100% ACRYLIC
SIZES: ONE SIZE FITS ALL



205 VEVITER



12 BLACK



BOOKING ONLY



STRIPE COLLECTION

HOODIE FHO61A

CONTENT: 60% COTTON, 40% POLYESTER

SIZES: S, M, L, XL, 2XL



227 CLASSIC NAVY



194 EVERGREEN

T-SHIRT TSS61A

CONTENT: 64% COTTON, 36% POLYESTER

SIZES: S, M, L, XL, 2XL



227 CLASSIC NAVY



01 WHITE



194 EVERGREEN



QUARTER ZIP

FQZ61A

CONTENT: 60% COTTON, 40% POLYESTER

SIZES: S, M, L, XL, 2XL



227 CLASSIC NAVY



01 WHITE

POLO OSS61A

CONTENT: 60% COTTON, 40% POLYESTER

SIZES: S, M, L, XL, 2XL



227 CLASSIC NAVY



01 WHITE



213 RIVIERA



VARSITY JACKET JVJ61A

CONTENT: 100% POLYAMIDE

SIZES: S, M, L, XL, 2XL



227 CLASSIC NAVY

MESHBACK TRUCKER HTR61A

CONTENT: 73% POLYESTER, 27% COTTON
SIZES: ADULT



227 CLASSIC NAVY



213 RIVIERA



194 EVERGREEN

BASEBALL CAP

HLW61A

CONTENT: 100% COTTON
SIZES: ADULT



194 EVERGREEN



01 WHITE





TSS26CA2
BURGUNDY



TSS26CA
BLACK



FHO26CA
GREY MIX



FFZ26CA
BLACK



FFZ26CA
BLACK



HPM26CA
BURGUNDY



HBE26CA
BLACK



HLW26CA
BLACK



HTR26CA
BLACK



TSS26US2
GREY MIX



TSS26US
STAR WHITE



FHO26US
CLASSIC NAVY



FFZ26US
CLASSIC NAVY



FHZ26US
CLASSIC NAVY



HPM26US
CLASSIC NAVY



HBE26US
CLASSIC NAVY



HLW26US
STAR WHITE



HTR26US
CLASSIC NAVY



TSS26GE2
GREY MIX



TSS26GE
BLACK



FHO26GE
BLACK



FFZ26GE
BLACK



FHZ26GE
BLACK



HPM26GE
BURGUNDY



HBE26GE
BLACK



HLW26GE
BLACK



HTR26GE
BLACK



TSS26SI2
BURGUNDY



TSS26SI
STAR WHITE



FHO26SI
GREY MIX



FFZ26SI
BLACK



FHZ26SI
BLACK



HPM26SI
STAR WHITE



HBE26SI
BLACK



HLW26SI
BLACK



HTR26SI
STAR WHITE



TSS6M02
221 LIGHT GREY MELANGE



TSS6M01
227 CLASSIC NAVY



FHO6M02
221 LIGHT GREY MELANGE



FQZ6M01
227 CLASSIC NAVY



FCR6M01
227 CLASSIC NAVY



FHO6M01
227 CLASSIC NAVY



HPM6M02
MTC



HPM6M01
MTC



HPM6M03
MTC



HTR6M01
MTC



HLW6M02
MTC



HLW6M01
MTC



TSS6M02
227 CLASSIC NAVY



TSS6M01
221 LIGHT GREY MELANGE



FHO6M02
221 LIGHT GREY MELANGE



FQZ6M01
227 CLASSIC NAVY



FCR6M01
221 LIGHT GREY MELANGE



FHO6M01
227 CLASSIC NAVY



HPM6M02
MTC



HPM6M01
MTC



HPM6M03
MTC



HTR6M01
MTC



HLW6M02
MTC



HLW6M01
MTC



TSS6M02
221 LIGHT GREY MELANGE



TSS6M01
227 CLASSIC NAVY



FHO6M02
221 LIGHT GREY MELANGE



FQZ6M01
227 CLASSIC NAVY



FCR6M01
227 CLASSIC NAVY



FHO6M01
227 CLASSIC NAVY



HPM6M02
MTC



HPM6M01
MTC



HPM6M03
MTC



HTR6M01
MTC



HLW6M02
MTC



HLW6M01
MTC



TSS6M01

221 LIGHT GREY MELANGE



FCR6M01

221 LIGHT GREY MELANGE



FQZ6M01

227 CLASSIC NAVY



FHO6M01

227 CLASSIC NAVY



HTR6M01

MTC



HLW6M02

MTC



HPM6M03

MTC



TSS6M02
221 LIGHT GREY MELANGE



TSS6M01
BURGUNDY



FHO6M02
221 LIGHT GREY MELANGE



FQZ6M01
BURGUNDY



FCR6M01
BURGUNDY



FHO6M01
BURGUNDY



HPM6M02
MTC



HPM6M01
MTC



HPM6M03
MTC



HTR6M01
MTC



HLW6M02
MTC



HLW6M01
MTC



TSS6M02
227 CLASSIC NAVY



TSS6M01
221 LIGHT GREY MELANGE



FHO6M02
221 LIGHT GREY MELANGE



FQZ6M01
227 CLASSIC NAVY



FCR6M01
221 LIGHT GREY MELANGE



FHO6M01
227 CLASSIC NAVY



HPM6M02
MTC



HPM6M01
MTC



HPM6M03
MTC



HTR6M01
MTC



HLW6M02
MTC



HLW6M01
MTC

CCM