

ICE COLLECTION



SURF THE NEW WAVE!



SURF  
NEW



Master



20  
THE  
WAVE

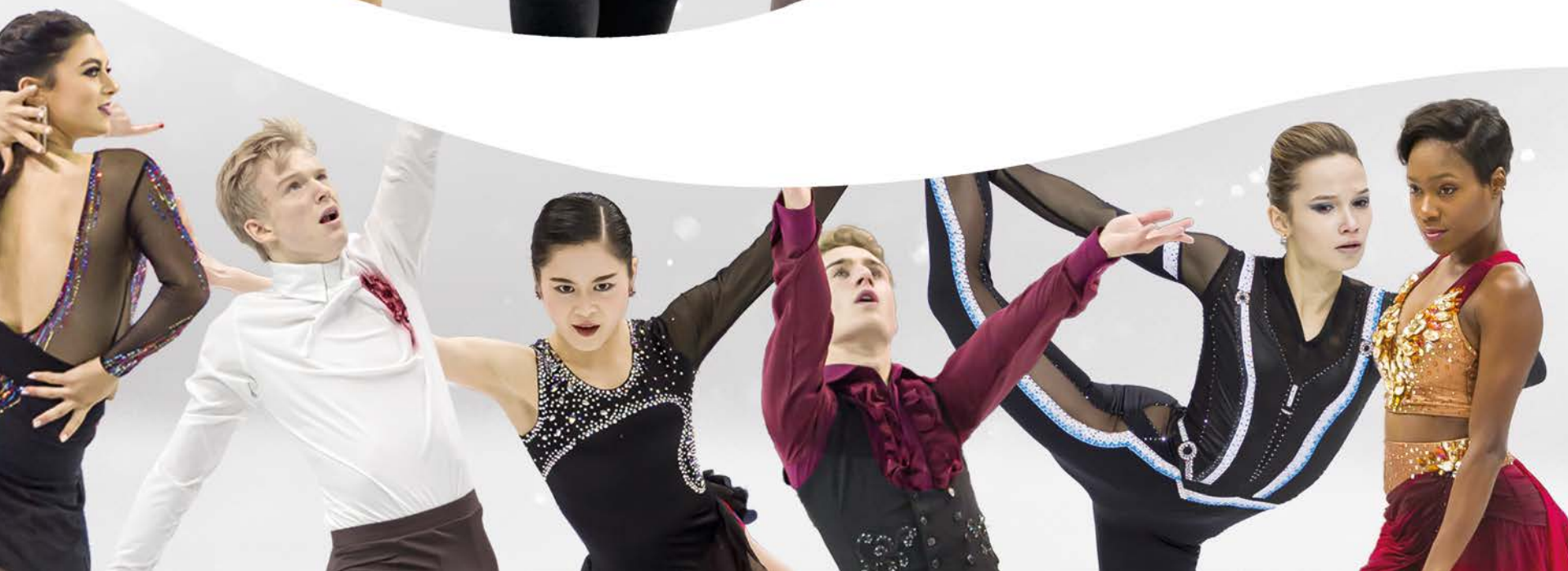
  
EDE  
[www.edeaskates.com](http://www.edeaskates.com)

*Bali*











# 7 REASONS WHY





A close-up, vertical view of a white ice skate boot on the left side of the page. The boot is shown from the laces down to the blade, highlighting the intricate stitching and the metallic blade at the bottom.

#### › INNOVATION THROUGHOUT

The molded sole and hi-tech screws provide secure mounting. Steel hooks are positioned for more secure, comfortable lacing, locking the foot in position for better control and power while allowing a greater range of movement.

#### › GREATER FEEL MORE CONTROL

The thinner technical sole gives a lower centre of gravity and a better feel. The revolutionary heel design increases control, allowing skaters to feel the edge.

#### › SHORTER BREAK-IN TIME

The anatomical design and technical materials mean reduced break-in time. The memory foam shapes to the foot allowing the boots to adjust in just one session.

#### › INSTANT CUSTOM FIT

The memory foam hugs the foot to give an instant custom fit. And if required, the anatomical shell can be adjusted by skilled technicians to give that personal touch.

#### › GREATER COMFORT

The redesigned profiles increase the range of movement making skating more fluid. The heel pocket and anatomical design support without pressure points and the memory foam gives added comfort.

#### › ULTRA LIGHT WEIGHT

Innovation has made our boots the lightest, creating quicker acceleration, allowing faster transition, and giving the skater a better feel.

#### › 100% ITALIAN

From drawing board to ice rink we are driven by passion, innovation and style. Italian design and manufacture means all our boots come with built-in elegance and quality.





**IMPACT**



**SHOCK**





# PIANO ANTI-SHOCK SYSTEM

› When landing a force equivalent to up to **eight times your body weight** spreads throughout your body. These **impact shockwaves** can cause **muscular-skeletal degeneration** and injuries through overtraining. Piano is designed to absorb and disperse these harmful shockwaves.

› Two integrated NOENE anti-shock layers and a PORON heel **reduce impacts** and the strain on the body. This allows the skater to transition more quickly adding fluidity to skating. As well as **minimizing impacts** the heel and sole combine to **reduce ice chatter** giving you a greater feel and a more stable base to take off from. The design increases lateral support improving power transfer while allowing a greater movement range.



DISPERSAL



# PIANO



## **Smoother skating**

Dual layer anti-shock system reduces impact while increasing stability

## **Greater thrust**

New lateral support for quicker, increased power transfer

## **More control**

Improved heel pocket and extra tongue tabs give an improved foot position for better feel and quicker movement

## **More comfort**

Longer boot collar for greater movement range

## **Fresh skates**

Micro-perforated air tech lining for super quick drying

## **Increased flexibility**

through two piece tongue

## **Finishing touches**

Fashion sole and Swarovski® Crystals



Find out more:



## **▶ AVAILABLE**

	WHITE	BLACK
B	225-280	225-295
C	225-280	225-310
D	225-280	225-305
E	Not available	
	Istant custom fit	225-310

**▶ SUPPORT**  
EXTRA STRONG

**▶ PERFORMANCE**  
TRIPLE QUAD JUMPS\*

\*this is a general indication



PIANO



# ICE FLY



**Ultra modern materials**  
and design for skaters who like winning.

**Lightness**  
Lightweight for extra agility  
and added spring

**Increased thrust through**  
extra lateral support for more power  
transfer.

**Smoother skating**  
Dual sole reduces vibrations and ice  
chatter giving greater fluidity on the ice

**Fresh skates**  
Micro-perforated air tech lining  
for super quick drying

**Improved flexibility**  
through two piece tongue

**Finishing touches**  
Fashion sole  
and Swarovski® Crystals



Find out more:



## ► AVAILABLE

	WHITE	BLACK
B	205-290	205-295
C	205-290	205-310
D	205-285	205-305
E	235-285	235-305
	Istant custom fit	215-310

► **SUPPORT**  
EXTRA STRONG

► **PERFORMANCE**  
TRIPLE QUAD JUMPS\*

\*this is a general indication



ICE FLY





# CONCERTO



**High performance skating**  
combined with a traditional look

**Increased support**  
Stiffer tongue combined with  
improved lateral support for better hold

**Smoother skating**  
Dual sole reduces vibrations and ice  
chatter

**Added comfort**  
Longer padded back cuff for greater  
movement range

**Fresh skates**  
Perforated anti-bacterial, micro-fiber  
lining for quick drying

**Finishing touches**  
Fashion sole, Champagne  
colored heel and  
Swarovski® Crystals



Find out more:



## ► AVAILABLE

	IVORY	BLACK
B	225-290	225-295
C	225-290	225-310
D	225-290	225-310
E	235-285	235-305
Istant custom fit		225-310

► **SUPPORT**  
EXTRA STRONG

► **PERFORMANCE**  
TRIPLE QUAD JUMPS\*

\*this is a general indication



CONCERTO



# VERVE



New for 2020, a super stylish boot for skaters competing seriously, jumping doubles and looking to include triples but who also care about looks. This boot combines both performance and esthetics to give you the edge in competition. In addition Verve's technical construction means it is a Vegan boot.

## Easy lacing and greater hold

provided by the ergonomically placed 4 steel hooks

## Smoother skating

Dual sole reduces vibrations and ice chatter giving greater fluidity on the ice

## Added comfort

Longer padded back cuff

## Fresh skates

Perforated anti-bacterial, micro-fiber lining for quick drying

## Stylish

Subtle patterned upper (embossed techno-micro material) with insert panels highlighted by Swarovski® Crystals

## Finishing touches

Feature heel and sole Swarovski® Crystals



► **SUPPORT**  
RIGID

► **PERFORMANCE**  
DOUBLE/TRIPLE JUMPS\*

\*this is a general indication

## ► AVAILABLE

	WHITE	BLACK
B	225-280	225-280
C	225-280	225-280
D	225-280	225-280
E	235-280	235-280
	Istant custom fit	225-280



VERVE





# CHORUS



**Designed for serious skaters**  
looking to include double jumps  
in their routines

**More control**  
Strong lateral support for more  
power transfer

**Added comfort**  
New longer padded back cuff

**Easy-wipe care**  
Leather upper with special  
water-repellent treatment

**Fresh skates**  
Perforated anti-bacterial,  
micro-fiber lining for quick drying

**Finishing touches**  
Fashion sole, Champagne colored  
heel and Swarovski® Crystals



Find out more:



➤ **SUPPORT**  
RIGID

➤ **PERFORMANCE**  
DOUBLE JUMPS\*

\*this is a general indication

## ➤ AVAILABLE

	IVORY	BLACK
B	205-290	205-295
C	205-290	205-310
D	205-290	205-310
E	235-290	235-310
	Istant custom fit	215-310



CHORUS



# OVERTURE



**Great support and flexibility**  
through lightweight Italian design

**Added comfort**  
new padded back cuff

**Easy-wipe care**  
leather upper with special  
water-repellent treatment

**Fresh skates**  
anti-bacterial, micro-fiber lining

**Ready to skate**  
Available with blades already fitted

**Finishing touches**  
Fashion sole, Champagne colored  
heel and Swarovski® Crystals



Find out more:



## ► AVAILABLE

	IVORY	BLACK
B	195-295	195-295
C	195-295	195-310
D	205-295	205-310
E	235-295	235-310
	Istant custom fit	215-310

► **SUPPORT**  
MEDIUM RIGID

► **PERFORMANCE**  
SINGLE JUMPS/AXEL \*

\*this is a general indication



OVERTURE



# MOTIVO



## **Designed**

to give you the best start in skating  
with that professional look

## **Confidence and control**

lacing system with Edea hooks

## **Easy-wipe care**

Upper with special water  
repellent treatment

## **Fresh skates**

Extra soft padded  
anti-bacterial lining

## **Ready to skate**

Available with blades  
already fitted

## **Finishing touches**

Fashion sole and  
Swarovski® Crystals laces



Find out more:



► **SUPPORT**  
MEDIUM RIGID

► **PERFORMANCE**  
SINGLE JUMPS/AXEL\*

\*this is a general indication

► **AVAILABLE**  
IVORY 185 – 280  
BLACK 185 – 280



MOTIVO



# WAVE



New for 2020, a beginners boot for the style conscious.  
Make waves at your ice rink with Edea's trend setting Wave boot.

The Exclusive wave pattern is created by an ultra modern 3D material and is compliment by golden finishing for the ultimate in style.

## **Designed**

with the beginner in mind,  
so easier to put on and take off

## **Lacing System**

4 hooks for easier lacing  
and greater hold

## **Added warmth**

Special thermo-insulating material

## **Added comfort**

Extra padding on both  
tongue and cuffs

## **Fresh skates**

Antibacterial quick-dry lining

## **Ready to skate**

Available with blades  
already fitted



► **SUPPORT**  
MEDIUM RIGID

► **PERFORMANCE**  
BASIC SKILLS\*

► **AVAILABLE**  
WHITE C 185 – 280

\*this is a general indication



WAVE

# TEMPO



## **Designed**

with the beginner in mind, so easier to put on and take off

## **Lacing System**

provided by the ergonomically placed 4 steel hooks

## **Added warmth**

Special thermo-insulating material

## **Added comfort**

Extra padding on both tongue and cuffs

## **Easy care materials**

Simply wipe down after skating

## **Fresh skates**

Antibacterial quick-dry lining

## **Ready to skate**

Available with blades already fitted

## **Finishing touches**

Swarovski® Crystals laces



► **SUPPORT**  
MEDIUM RIGID

► **PERFORMANCE**  
BASIC SKILLS AMATEUR\*

► **AVAILABLE**  
WHITE C 185-280

\*this is a general indication





TEMPO

# FLAMENCO ICE



**Specifically designed for dance**  
using modern technology to maximize  
grace and elegance

**Dance profile**  
Low cut dance profile for support but  
with additional movement range

**Increased comfort and flexibility**  
with longer back cuff

**More secure**  
foot position via refined tongue tabs

**Smoother skating**  
Dual sole reduces vibrations and ice  
chatter giving greater feel

**Fresh skate**  
Perforated anti-bacterial,  
micro-fibre lining for quick drying

**Finishing touches**  
Fashion sole  
and Swarovski® Crystals



Find out more:



## ► AVAILABLE

	WHITE	BLACK
B	235-270	255-310
C	235-270	255-310
D	235-270	255-310
E	235-270	235-310
	Istant custom fit	215-310

## ► PERFORMANCE ALL DANCE LEVELS

\*this is a general indication



FLAMENCO  
ICE



# MASTER



Designed specifically for coaches.  
The boot gives support for doubles jumps to allow coaches to demo moves but also has an added thermo lining using Thinsulate® to keep feet warm.

## Thinsulate® lining

New thermo-insulating to increase warmth for those long days on the ice

## Easy lacing and greater hold

Provided by 4 hooks

## Added comfort

New longer padded back cuff and wider fit

## Finishing touches

Patterned upper with Swarovski® Crystals and a feature heel because style never goes out of fashion!



➤ **SUPPORT**  
RIGID

➤ **PERFORMANCE**  
COACH\*

\*this is a general indication

➤ **AVAILABLE**

	IVORY	BLACK
D	235-280	255-310



MASTER

NEW!



# E-GUARDS

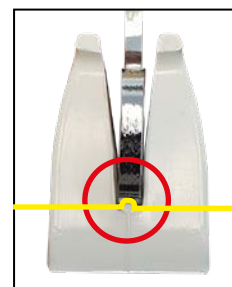
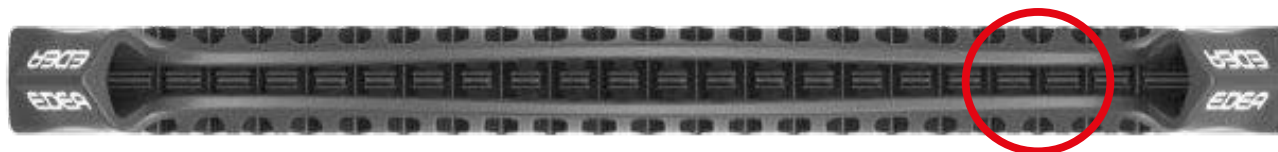
The new generation skate guard completely changes your life at the rink. Inspired by nature, the E-guard has been completely rethought for better drainage and protection and it is so easy and quick to use. Patent pending. Don't wait, simply snap on and walk off in yours!

- GLITTER RAINBOW
- SPLASH YELLOW
- SPLASH PINK
- OMBRE PINK & PURPLE
- OMBRE YELLOW & BLU
- OMBRE BLACK & SILVER
- OMBRE BLACK & GOLD
- OMBRE WHITE & GOLD
- OMBRE WHITE & SILVER
- OMBRE WHITE & CHAMPAGNE
- GLOWING YELLOW
- JOYOUS ORANGE
- HARMONY GREEN
- PLAYFUL FUCSIA
- HAPPINESS BLUE
- POLISHED GREY
- PURE WHITE
- ELEGANT BLACK
- MAGICAL PURPLE
- RELAX BLUE
- FLAG\*  
\*on request



► **SUPPORT**

Unique **vertebrae** profile to support blade hollow and protect edges



E-GUARDS EDEA



TRADITIONAL



► **ONE PIECE**

no fiddling, no parts, no assembly. It **STRETCHES** to fit all sizes



► **EASY WALK**

wider rubberized grip makes walking easier with less slipping



► **DESIGNED**

to fits all blades types



► **CUSHION**

rubberized sole is softer and quieter.  
No more click-clack

► **EASY CARE**

superior drainage  
means drier blades  
and less rust





NEW!

# E-SPINNER



For 2020 Edea have created a new technical spinner with an improved rocker and new axis for a more realistic spin and take offs.  
Ideal for serious skaters to practise and perfect their moves off the ice. Patent pending.



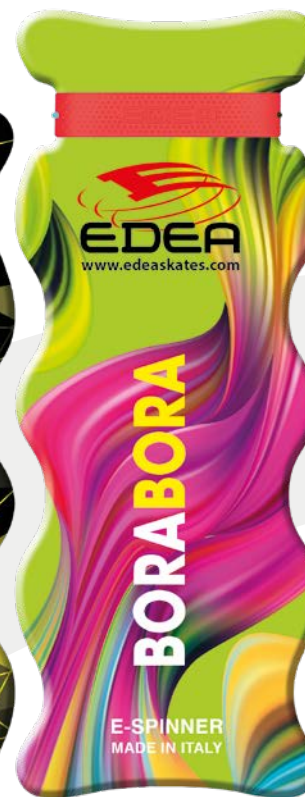
▶ BAHAMAS



▶ MAUI



▶ COOK



▶ BORA BORA



▶ TOBAGO

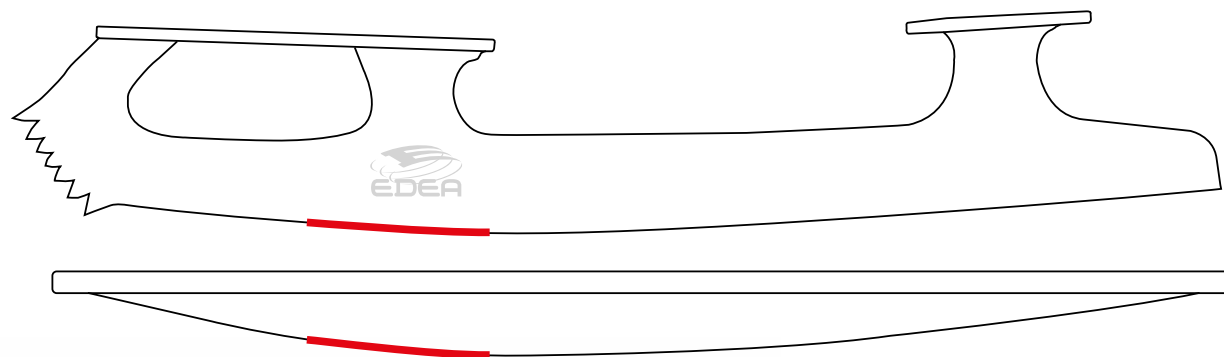


▶ BALI

## SHAPED FOR PERFECT PRACTICE!

## ► NEW PROFILE

Designed to mimic a blade thus giving it a more realistic feel  
The more **realistic rocker** is designed to reduce friction and increase the feel of being on real ice.  
The taller rocker and blade profile combine to move the spinning point and create the perfect off-ice partner



## ► TAKE OFF JUMPS BANDS

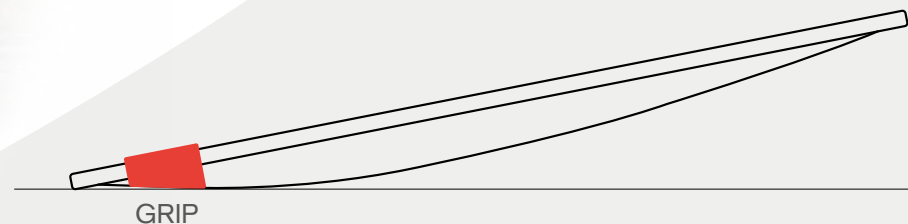
The special bands allow **take offs** to be practiced.  
Two bands are included for use on different surfaces



HARD BAND JUMPS

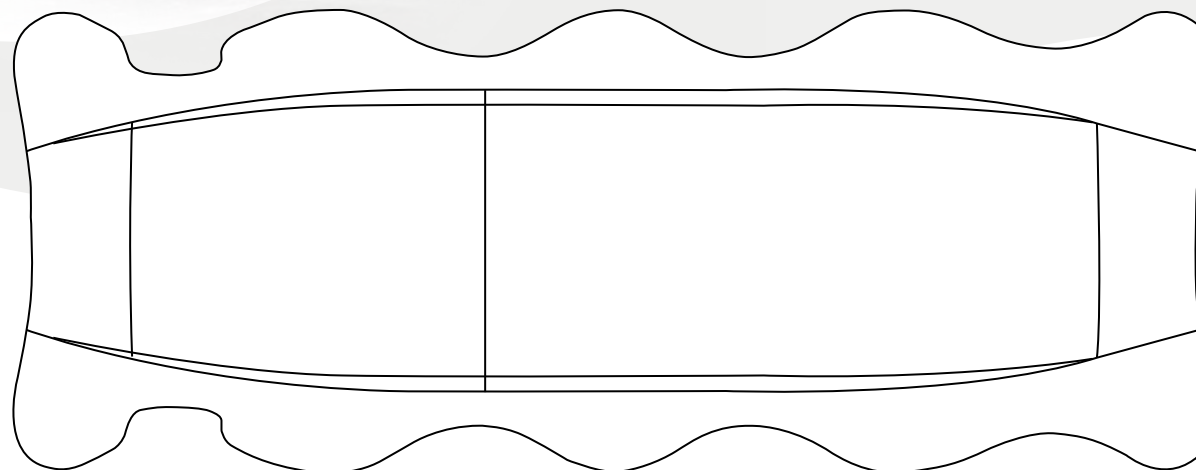


SOFT BAND JUMPS



## ► THE NEW WAVE DESIGN

Allows the platform to be wider and improves performing by making it easier to practice





NEW!

SPINNER



» ALIENS



» SLIME



» LAMALOVE



» FLAMINGO



» LOVER



» CIOK



» PIRATE



» UNICORN



» CANDY



» STAR



» ELSA



NEW!

GLITTER



LIBRA "SKY"



LIBRA "GREY"



# LIBRA BAGS

The ultimate backpack for skaters. Designed to keep all your essentials together and charge your mobile on the move!

LIBRA



**External pocket** for water bottle (not included)



**External USB** port connected via cable to an internal power bank (not supplied) to allow charging on the move



**Separate ventilated** side pockets for perfect boot transport



**Integrated hood** to keep bag dry in the rain





› WITH ME BAG  
"BLACK"\*



› WITH ME BAG  
"CHAMPAGNE"\*



› WITH ME BAG  
"PINK"\*



› WITH ME BAG  
"ICE"\*



› TROLLEY



› DESIGNER TROLLEY



› SUPER TROLLEY





› SKATE BAG  
"CHITA"



› SKATE BAG  
"PLUME"



BAGS



› SKATE BAG  
"LOVE" PINK



› SKATE BAG  
"LOVE" BLACK



› SKATE BAG  
"JACQUARD"



NEW!



► FLAMINGO



► SEAHORSE



► PONY



► PINKI



► GECKO



► KANGAROO



► OWL



► DRAGON



› HEDGEHOG



› DARNIER

## › MAXI BLADE BUDDIES

Extra-padded cute animals with embroidered eyes to keep your blade dry off the ice. Reinforced at the front and back to protect the teeth and the tail of your blade. Add a smile to dry blade storage by choosing your favorite.



MAXI



› POODLE



› TURTLE



› PEACOCK



› OSTRICH



› ST. BERNARD



› LADYBUG

› ANIMAL BLADE BUDDIES  
(original version)

› PAPILLON

› MERMAID

› PANDA

› MONKEY

› COW

› RABBIT

› WHALE

› SEADOG

› COCKER

› DRAGON

› PENGUIN

› ZEBRA

› EXTENDABLE SKATEGUARDS

(2 piece spring loaded guards)





NEW!

# TISSUE BOX



► YUKI



► MEI

## ► TISSUE BOX

Add some fun to that essential tissue box with our new cuddly animals. Yuki or Mei, dog or cat, it's up to you!

Two side pockets for those other essentials.

(Note: you'll need to buy your own tissues!)



27 cm

42 cm



› TOUCH GRIPPING GLOVES BLACK  
Size: S-M-L



› GRIPPING GLOVES "SKIN"  
Size: S-M-L



› GRIPPING GLOVES "BLACK"  
Size: S-M-L



› GRIPPING GLOVES "WHITE"  
Size: S-M-L



› GRIPPING GLOVES "LIGHT BLUE"  
Size: S-M-L



› GRIPPING GLOVES "ROSE"  
Size: S-M-L



› SOCKS IVORY S-M  
Size: S 200-235 - L 240-270



› SOCKS BLACK M-L  
Size: M 240-270 - L 275-290



› LACE STRAPS



› STRASS GRIPPING GLOVES BLACK  
Size: S-M-L



Size:  
225-235  
240-250  
255-265  
270-280  
285-295  
300-310



► THERMO BOOT COVER



► BLADE TOWEL



Black Ivory White



► POLISH



► LACE PULLER



► LACES



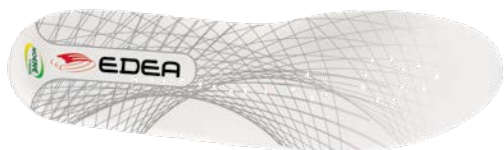
► LACES  
1 SWAROVSKI® CRYSTAL



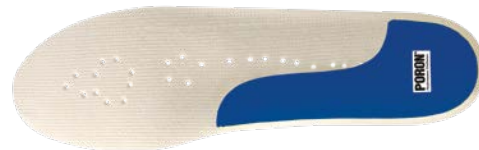
► INSOLES LITE  
Size: 195-310



► INSOLES LATEX  
Size: 185-310



► E-SOLES



► INSOLES IMPACT



► ANTISHOCK UNDERSOLE BY NOENE  
Size: 195-310

\*



► ODOR ABSORBERS

\*Limited quantity

# SIZING

## THE PERFECT SIZE



In order to get the correct length you need to use the Edea measuring device.

## THE PERFECT FIT



90% of feet fit our C or standard width. Edea stretchers make the final adjustment to give the perfect custom fit. Non-standard widths are available on special request (B-narrow; D-wide; E-extrawide).

# LACING



EDEA boots need to be laced properly for performance and unlaced after to maintain shape.



1. Lace inside and out to maximise the hold and to lock the foot into optimum position



2. For a good lacing it has to be tighter at the instep (the top 3 eyelets and bottom hook)



3. After skating undo the laces completely, make sure the tongue is upright

# MOUNTING



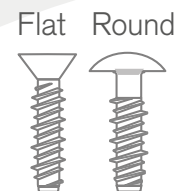
EDEA boots have thinner technical soles and need special tools and hi-low screws for mounting the blade.

## ONE DRILL BIT EXTENSION 2,5 MM.



Specially measured drill bit holder ensures accurate depth of holes. 2,5mm drill bits are used for EDEA Hi-Low screws.

## SET OF 100 HI-LOW SCREWS



Edea hi-lo screws are dual helix to increase hold. Do not use any other screw.

## PRE-CUT FILLERS



Essential for repositioning blades. Each pack includes 25x2,5mm pre-cut carbon bars.



# MOUNTING STAND

Stands for quick and precise blade mounting are practical and portable.

## SPECIALIST KIT

- Manual mounting stand
- +drill bit extension
- +extension
- +Hi-low screws
- +fillers
- +apron

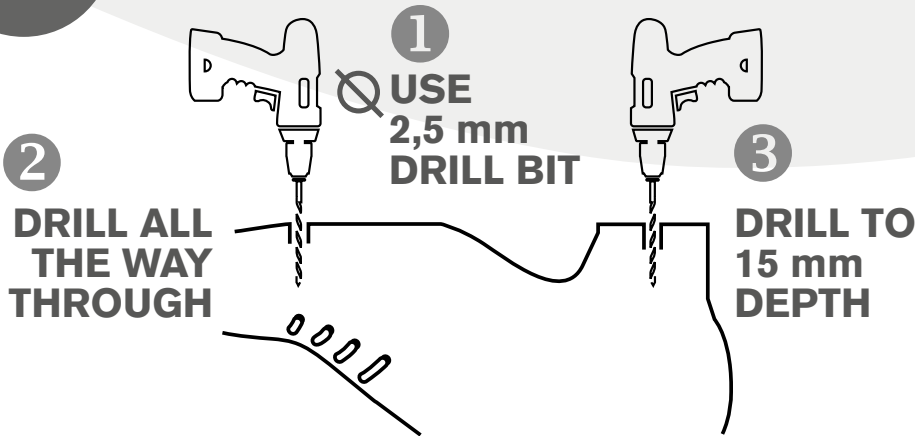


## PROFESSIONAL KIT

- Pneumatic mounting stand
- +drill bit extension
- +extension
- +Hi-low screws
- +fillers
- +apron



# IMPORTANT



# BLADES



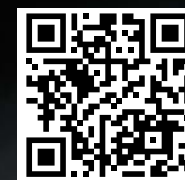
BOOTS SIZE	185	195	205	215	225	235	245	255	265	275	285	295	305
	190	200	210	220	230	240	250	260	270	280	290	300	310
BLADE SIZE 1/3	7	7 1/3	7 2/3	8	8 2/3	9	9 1/3	9 2/3	10	10 1/3	10 2/3	11	11 1/3
BLADE SIZE 1/4	7	7 1/2	7 3/4	8	8 1/2	9	9 1/4	9 3/4	10	10 1/2	10 3/4	11 1/4	11 1/2



# ICE COLLECTION



2020



[edeaskates.com](http://edeaskates.com)  
2020